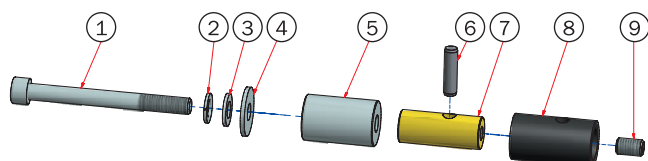


# Operating Instructions

## Rothewald® Front Adaptor “Radial and Pin” | Order no. 10002628

### Scope of delivery/parts list:

Pos.	Quantity:	Description:
1.	2 x	Hexagon socket screw M10 x 100
2.	2 x	Spring washer
3.	2 x	Plain washer M10 (small)
4.	2 x	Plain washer M10 (large)
5.	2 x	Spacer sleeve dia. 28 x 44
6.	2 x	(Replacement)-pin
7.	2 x	Holder for front adaptor
8.	2 x	Rubber pad dia. 27 x 50 with pin hole
9.	2 x	Grub screw M10 x 16



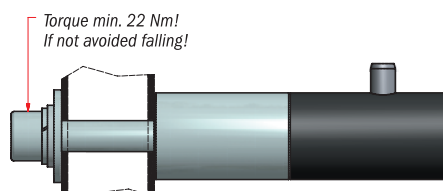
Dear Customer, thank you for placing your trust in our product. Please use these instructions when installing the product and assembling the article. This adaptor is used to expand the range of applications of the Rothewald® Universal Motorcycle Stand “Professional” (Order no. 10002630) and allows it to safely jack up motorcycles with radial brake calipers on the front fork. It can also be used on any motorbike by inserting the integrated pins into the lower fork holes. The front wheel is then clear of the ground. Servicing your bike, or changing the front wheel\*, can then be done professionally.

*\*Does not apply to use on radial brake calipers!*

The Rothewald® “Radial and Pin” Front Adaptor in combination with the Universal Motorcycle Stand “Professional” is suitable for a maximum load of 150 kg. This means that the overall weight of your motorcycle, incl. accessories, must not exceed 300 kg.

### Installation:

If necessary, remove the rubberised swing arm platforms from the Rothewald® Universal Motorcycle Stand “Professional” (Order no. 10002630). Now mount the front adaptor kit according to the following diagram.



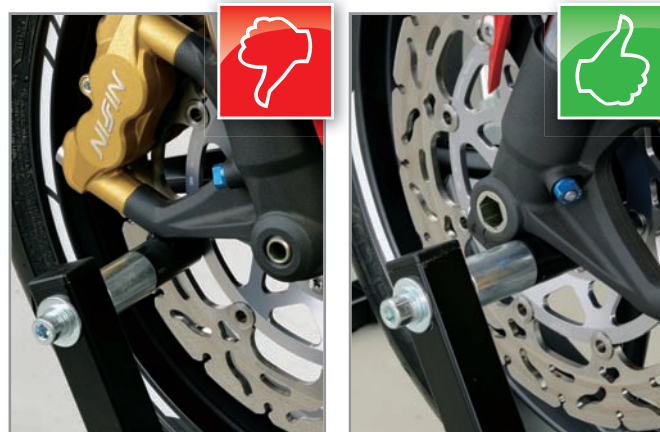
The front adaptors must be screwed tightly (minimum torque 22 Nm) onto the Rothewald® Universal Motorcycle Stand “Professional” using the M10 hexagon socket screws included in the scope of delivery. Otherwise there is an acute risk of the bike tipping over!



### How to use on radial brake calipers:

If your motorcycle has radial brake calipers on the left and right front forks, these can be used as a mount for the front adaptor (see below image on the right). In that case, remove the pins in the rubberised front adaptors by loosening the M10 grub screws on the sides.

**Caution:** Removal of the front wheel is not permitted in this case (risk of falling)!



Example: WRONG

Example: CORRECT

If you are not sure whether the brake caliper mounts on your motorcycle are suitable as a support for a front head stand, please consult your authorized dealer before use.

### Important note:

Never jack up the bike alone – you should always make sure that you have a second, strong person to help you, who can hold the motorcycle securely upright using the handlebar. Ensure that there are no other people or animals (especially children) around the vehicle.

Before using the front adaptor, you must always jack up the rear end of your bike first using a second motorcycle stand (e.g. a second Rothewald® Universal Motorcycle Stand “Professional”, Order no. 10002630). This has the effect of making the raised bike considerably more stable. Otherwise your motorcycle is at risk of tipping over and sustaining damage as a result.

Set the width of the fully assembled Rothewald® Universal Motorcycle Stand “Professional” with the “Radial and Pin” Front Adaptors according to your motorcycle. To do so, loosen the clamp screws on both sides of the stand and move it up to the fork of the motorcycle from the front. Position the side parts so that the entire length (important!) of the rubberised adaptors fits underneath the brake caliper mount of your radial brake calipers with the motorcycle located in the centre of the stand. Now re-tighten the clamp screws of the side parts firmly.

Other parts of the front fork or the brake calipers themselves must not be used as a support. Ensure that the supports of the stand and its side parts can neither damage nor scratch any components of the front fork, brake caliper, wheel, ABS system or front wheel spray protection during the lifting procedure. If necessary, protect the vulnerable parts from damage by masking them off or using a cloth. Refrain from using the stand if you are not 100 % sure that such usage will not result in damage!

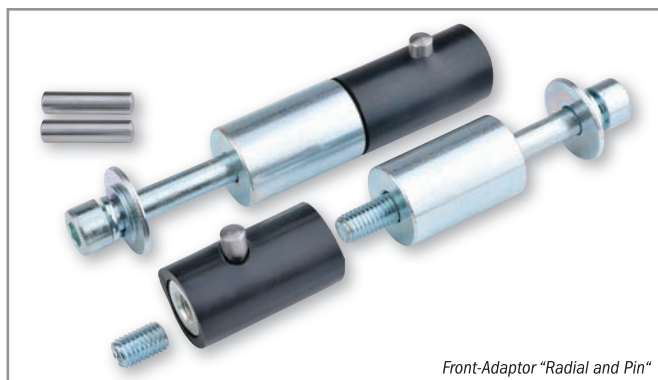
Before you jack the bike up, carefully check once again that the Rothewald® Motorcycle Stand “Professional” has been assembled properly, and that your assistant is holding the motorcycle securely in position. Then push the motorcycle stand at the handle forcefully, but slowly and evenly, under the motorcycle until it rests completely on the stand.

## Rothewald® Front Adaptor “Radial and Pin” | Order no. 10002628

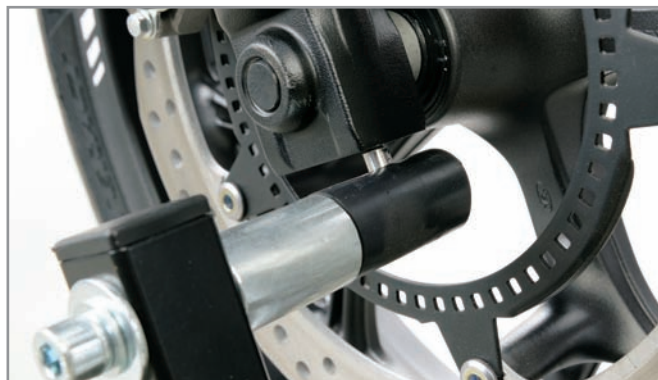
### Universal use (fork holes):

Firstly, please set the correct angle for the integrated pins of the front adaptor. The angle must correspond exactly to the profile of the fork holes of your motorcycle (important!). This is the only way to ensure that the forks of the motorcycle rest properly and safely on the rubberised adaptors. For safety reasons and to ensure that the angle setting remains permanently in place, the front adaptors must now be screwed tightly (minimum torque 22 Nm) onto the Rothewald® Universal Motorcycle Stand “Professional”. Otherwise there is an acute risk of the bike tipping over!

The next step is to adjust the width of the Rothewald® Universal Motorcycle Stand to suit your motorcycle. To do so, loosen the clamp screws on both side parts of the stand and move it up to the fork of the motorcycle from the front. Position the side parts so that the integrated pins of the rubberised adaptors engage the lower fork holes smoothly and completely when the motorcycle is located in the centre of the stand. Now re-tighten the clamp screws of the side parts firmly.



Front-Adaptor “Radial and Pin”



Examples of use



### Safety Instructions:

1. The Rothewald® Motorcycle Stand “Professional” (Order no. 10002630) in combination with the “Radial and Pin” Front Adaptor (Order no. 10002628) is suitable for a maximum load of 150 kg. This means that the overall weight of your motorcycle, incl. accessories, must not exceed 300 kg.

2. Before using the Rothewald® Motorcycle Stand and the “Radial and Pin” Front Adaptor, it is essential to make sure that these have been assembled correctly and that all of the screwed joints have been tightened up sufficiently.

3. When using the Rothewald® Motorcycle Stand “Professional” with the “Radial and Pin” Front Adaptors, ensure that no components of the front fork, brake caliper, wheel, ABS system or front wheel spray protection can be damaged or scratched.

4. Only use the Rothewald® Motorcycle Stand “Professional” on a solid, perfectly level surface (e.g., asphalt, concrete, stone). Never use it on loose sand or soft earth, because the motorcycle could slip/fall over and cause damage or injury.

5. Never jack up the bike alone – you should always make sure that you have a second, strong person to help you, who can hold the motorcycle securely upright using the handlebar.

6. Never place any part of your body under the jacked-up vehicle, and look out for other persons. At all times, ensure that there are no other people or animals (especially children) around the motorcycle while it is jacked up. Never sit on the bike while it is raised on the Rothewald® Motorcycle Stand “Professional”.

7. Before using the front adaptor, you must always jack up the rear end of your motorcycle first using a second motorcycle stand (e.g. a second Rothewald® Universal Motorcycle Stand “Professional”, Order no. 10002630). This has the effect of making the raised bike considerably more stable. Otherwise your motorcycle is at risk of tipping over and sustaining damage as a result.

8. Once jacked up, a motorcycle must not be moved any further under any circumstances.

Since this is a universal product and not intended for just one particular vehicle, it is important to make sure that it is suitable for your type of motorcycle before you use the product for the first time. Always follow the instructions in your vehicle operator's manual and the directions of the vehicle manufacturer. This is essential, as improper use of this product or its unsuitability for a vehicle could impair the safety and/or condition of the vehicle.

If you have any questions about the product or these instructions, please contact our Technical Centre by fax on 0049 (0)40 734193-58 or by e-mail at: [technikcenter@louis.de](mailto:technikcenter@louis.de) before you install or use the product. We will be pleased to provide prompt assistance. This is the best way to ensure that your product is installed properly and used correctly.

Exklusiv-Vertrieb durch: Detlev Louis Motorradvertriebs GmbH - Rungedamm 35 - 21035 Hamburg - Germany - [www.louis.eu](http://www.louis.eu) - E-Mail: [technikcenter@louis.de](mailto:technikcenter@louis.de)

Made in Germany