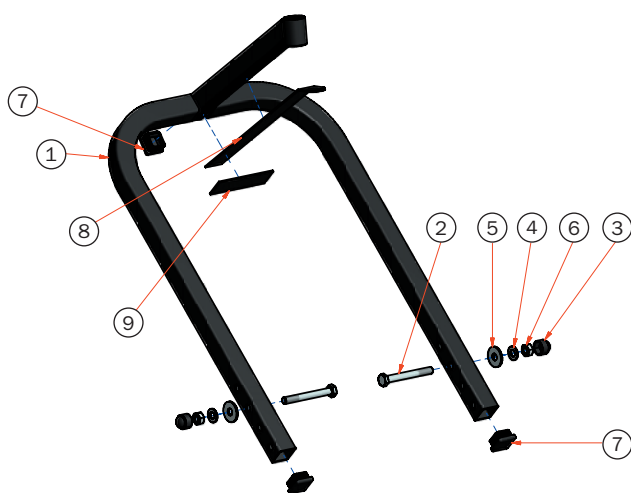


## Rothewald® Front Adaptor | Order no. 10002631

### Scope of delivery/parts list:

Pos.	Quantity:	Description:
1.	1 x	Front Adaptor
2.	2 x	Hex bolt M10 x 85
3.	2 x	Plastic dust cap for hex bolt M10/SW 17
4.	4 x	Plain washer M10 (dia. 20 mm)
5.	2 x	Plain washer M10 (dia. 29.5 mm)
6.	2 x	Hex nut M10
7.	3 x	Plastic end cap (black) for square tube
8.	1 x	Foam rubber strip (black) 30 cm
9.	1 x	Foam rubber strip (black) 10 cm



Congratulations on your purchase of the Rothewald® Front Adaptor. In combination with the Rothewald® "Profi" Universal Motorcycle Stand (Order no. 10002630), you can lift the complete front end of your bike from under the steering head. The front wheel is then clear of the ground. Servicing or installation tasks, such as changing the front wheel or forks, can be done professionally.

The Rothewald® Front Adaptor in combination with the "Profi" Universal Motorcycle Stand is suitable for a maximum load of 150 kg. This means that the overall weight of your motorcycle, incl. accessories, must not exceed 300 kg.

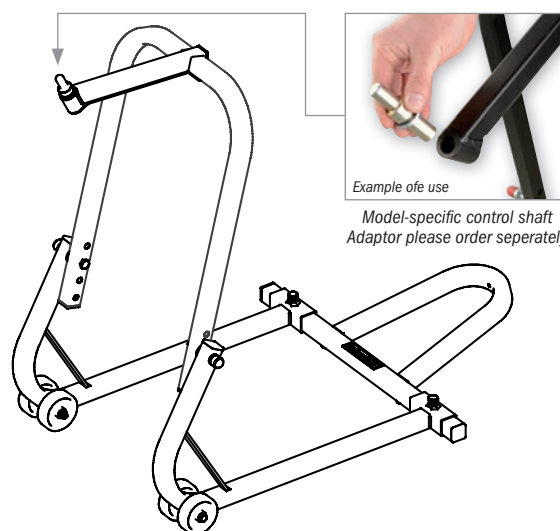
In order to use the Rothewald® Front Adaptor, you also require a steering head adaptor specifically intended for your motorcycle (not included in the scope of delivery, please order separately). The steering head is located in the lower triple tree of your motorcycle, positioned centrally and slightly offset towards the rear. As a rule, it is hollow inside and, on some models, the hole is protected against dirt by a cap which can easily be removed. Carefully measure the exact inside diameter of the steering head using a caliper gauge or another suitable measuring instrument. At the time of printing these operating instructions, Rothewald®/Kern-Stabi can offer you steering head adaptors in the standard diameters 13, 14.9, 15.6, 16.6, 17.8, 19.4, 19.8, 20.8, 22.8, 23.8, 26.8 and 27.5 mm (Order no. 10002660 ff).

For safety reasons, the steering head adaptor must fit precisely into the steering head!

### Installation:

If necessary, remove the rubberised swing arm platforms from the Rothewald® "Profi" Universal Motorcycle Stand (Order no. 10002630). To enable individual height adjustment, the Rothewald® Front Adaptor has four mount holes on each side. Ensure that the side-arm which is welded to the front adaptor, along with the slot for the steering head adaptor, points away from the handle piece of the motorcycle stand.

Having done so, guide the front adaptor between the arms of the motorcycle stand and mount it at the desired height using the M10 hex bolts enclosed where the rubberised swing arm platforms were previously secured. During this process, please remember to add the appropriate plain washers. Tighten the bolts just enough so that the front adaptor can still be moved back and forth. It must not be stiff under any circumstances, otherwise the jacking procedure will not function smoothly and the bike may fall! Now fit the self-adhesive foam rubber strips to the underside of the side-arm. Afterwards, insert the steering head adaptor which you have selected fully into the locating sleeve of the front adaptor which is provided for this purpose.



### How to use:

Before using the Front Adaptor, you must always jack up the rear end of your bike first using a second motorcycle stand (e.g. a second Rothewald® "Profi" Universal Motorcycle Stand, Order no. 10002630). This has the effect of making the raised bike considerably more stable. Otherwise your motorcycle is at risk of tipping over and sustaining damage as a result.

Only use the Rothewald® "Profi" Motorcycle Stand with Front Adaptor on a solid, perfectly level surface (e.g., asphalt, concrete, stone). Never use the stand on loose sand or soft earth, because the bike could slip/fall over and cause damage or injury.

Never place any part of your body under the raised motorcycle, and look out for other persons. Never sit on the motorcycle while it is jacked-up on the motorcycle stand. During use, ensure that no brake lines, brake linkages, speedometer cables, cables etc. are trapped or damaged. We recommend loosening any stubborn screws or nuts (e.g. axle nuts) before lifting. Once jacked-up, a motorcycle must not be moved any further under any circumstances.

In order to prevent damage (e.g. scratches) to the surfaces of the front mudguard or other components, we recommend that you cover the mudguard, fairings etc. with pieces of soft cloth or remove them altogether before using the motorcycle stand.

Never jack up the bike alone – you should always make sure that you have a second, strong person to help you, who can hold the motorcycle securely upright using the handlebar.

The first person now carefully pushes the motorcycle stand with Front Adaptor underneath the fork yoke of the motorcycle from in front of the bike and inserts the steering head adaptor into the steering head. If the motorcycle has a front fairing with a low-slung design, it is important that

## Rothewald® Front Adaptor | Order no. 10002631



the stand does not come into contact with the fairing. If this cannot be avoided, the stand must not be used! With some steering head adaptors, a spacer is included in the scope of delivery, which creates additional distance between the stand and the fairing. You must be able to insert the steering head adaptor into the steering head tube smoothly and completely, but it must have no play, i.e. no space in which to move sideways to and fro within the steering head tube.

The Rothewald® Motorcycle Stand is now aligned with the vehicle, however the bike is only raised afterwards. Then press down forcefully, but slowly and evenly on the motorcycle stand at the handle until the paddock stand is resting on the floor. When lifting the motorcycle, please ensure that the steering head adaptor does not slip out of the steering head. This can happen, particularly if the diameter of the steering head adaptor selected is too small (too much play for the adaptor within the steering head). At all times, ensure that there are no other people or animals (especially children) around the motorcycle.

### Safety Instructions:

1. The Rothewald® "Profi" Motorcycle Stand (Order no. 10002630) in combination with the Front Adaptor (Order no. 10002631) is suitable for a maximum load of 150 kg. This means that the overall weight of your motorcycle, incl. accessories, must not exceed 300 kg.
2. Before using the motorcycle stand and Front Adaptor, it is essential to make sure that they have been assembled correctly and that all of the screwed joints have been tightened up sufficiently.
3. When using the Rothewald® Motorcycle Stand with the Front Adaptor, ensure that no vehicle parts (e.g. brake lines, speedometer cable, cable, etc.) can be squashed.
4. Only use the Rothewald® Motorcycle Stand on a solid, perfectly level surface (e.g., asphalt, concrete, stone). Never use it on loose sand or soft earth, because the motorcycle could slip/fall over and cause damage or

injury.

5. Never place any part of your body under the jacked-up vehicle, and look out for other persons. At all times, ensure that there are no other people or animals (especially children) around the motorcycle while it is jacked up. Never sit on the bike while it is raised on the Rothewald® Motorcycle Stand.
6. Never jack up the bike alone – you should always make sure that you have a second, strong person to help you, who can hold the motorcycle securely upright using the handlebar.
7. Only use the Rothewald® steering head adaptor included within the scope of delivery or equivalents from the company Kern-Stabi (Order no. 10002660ff). This is the only way to ensure that the lifting procedure functions perfectly.
8. Before using the Front Adaptor, you must always jack up the rear end of your motorcycle first using a second motorcycle stand (e.g. a second Rothewald® "Profi" Universal Motorcycle Stand, Order no. 10002630). This has the effect of making the raised bike considerably more stable. Otherwise your motorcycle is at risk of tipping over and sustaining damage as a result.
9. Once jacked-up, a motorcycle must not be moved any further under any circumstances.

Since this is a universal product and not intended for just one particular vehicle, it is important to make sure that it is suitable for your type of motorcycle before you use the product for the first time. Always follow the instructions in your vehicle operator's manual and the directions of the vehicle manufacturer. This is essential, as improper use of this product or its unsuitability for a vehicle could impair the safety and/or condition of the vehicle.

If you have any questions about the product or these instructions, please contact our Technical Centre by fax on 0049 (0)40 734193-58 or by e-mail at: [technikcenter@louis.de](mailto:technikcenter@louis.de) before you install or use the product. We will be pleased to provide prompt assistance. This is the best way to ensure that your product is installed properly and used correctly.

Exklusiv-Vertrieb durch: Detlev Louis Motorradvertriebs GmbH - Rungedamm 35 - 21035 Hamburg - Deutschland - [www.louis.de](http://www.louis.de) - E-Mail: [technikcenter@louis.de](mailto:technikcenter@louis.de)

Made in Germany