



BIKER FASHION

Version: March 2014

Mounting instruction

Description

Springdale

Art. 4447
Harley Bag

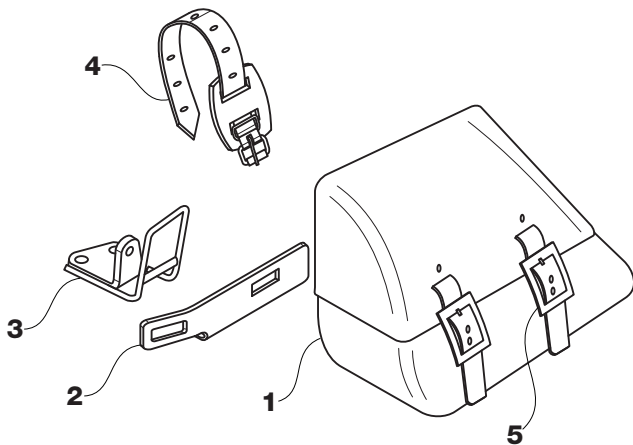
Models:

Suitable for all Harley Davidson Dyna models from year of manufacture 2006 without a pillion rider.

ATTENTION!

**Improper use of this item could cause an accident.
Please mount this article only, when you drive alone,
it's not suitable for pillion riders.**

Contents



- 1. leather bag
- 2. lower mounting bracket
- 3. front mounting bracket
- 4. mounting strap
- 5. buckles of the bag

Weight Capacity

The maximum loading weight of the bag amounts to 2 kg.

ATTENTION!

**Don't overload the saddlebag.
Unstable ride characteristics and accidents could be
a result of too much weight in the bag.**

Fitting notes

When fitting the mounting brackets to your bike, first secure the motorcycle with a paddock stand or lifting ramp if possible.

Depending on the model, loosen the drive belts slightly to allow you to more easily use the necessary mounting points and retighten once they are fitted.

Removal of foot pegs / belt guard

Dyna models with pillion foot pegs

Remove both foot pegs. Keep the screws and lining discs for a later installation.

Dyna models without pillion foot pegs

Remove the screws and lining discs of the belt protection guards, to release the belt guard.
Keep the screws and lining discs for re-installation.

Fitting

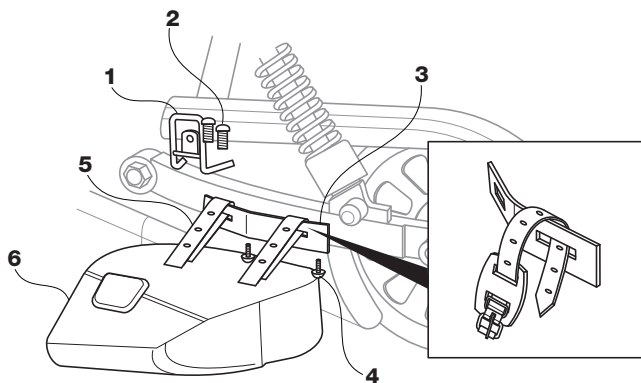


Illustration 1: mount the brackets for the bag

- | | |
|--------------------------|------------------|
| 1 front mounting bracket | 4 screws |
| 2 screws | 5 mounting strap |
| 3 lower mounting bracket | 6 saddle bag |

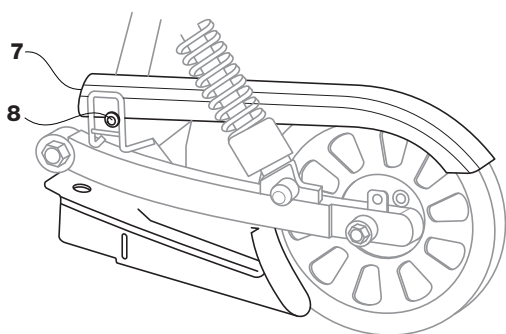


Illustration 2: mount the strap protection

- | | |
|--------------------|---------|
| 7 strap protection | 8 screw |
|--------------------|---------|

1. Install the front mounting bracket (1) in the same place as the left foot peg has been removed from using the removed screws from the foot peg.

► see illustration no. 1

2. Install the strap protection (7) on the front mounting bracket using the previously removed removed screw (8) and tighten (34 – 47 Nm).

► see illustration no. 2

3. Before you fix your saddlebag (6) on the bike, mount the bag loose on the mounting bracket (3), as follows:

► see illustration no. 1

- Take the mounting strap (5), the buckle fastening needs to point upwards from the inside of the bag and lace the strap through the upper mounting points outwards, over the mounting bracket (3) and back through the mounting point (3).
- Forward with the lower mounting aperture, back in the inside of the saddlebag.
- Lock the buckle fastening of the mounting strap (5) inside the bag (should be loose, without pressure).
- Using the flaps of the straps (3) you cover both mounting points.
- Repeat the procedure with the other mounting strap

4. Mount the lower mounting bracket (3) on the swing arm as follow:

► see illustration no. 1

- Remove both of the rear screws (4) from the mud flap on the swing arm.
- Mount the lower mounting bracket (3) on the mud flap and the swing arm, with the removed screws (4). Pull tight with 4, 5 – 6, 7 Nm.

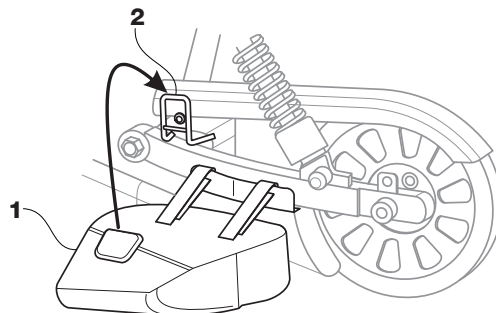


Illustration 3: Mount the bag

- | |
|--------------------------|
| 1 saddlebag |
| 2 front mounting bracket |

5. Secure the saddlebag (1) on the front mounting bracket (2) as follows:

► see illustration no. 3

- Move the mounting strap on the backside of the bag (1), over the front mounting bracket (2).
- Tighten both straps in the inside of the bag.

Note: Even with the straps tightly fastened the saddlebag could seem to be a little loose, that's normal.

Care

Clean the leather saddlebag constantly and grease the leather with a dubbin to keep the bag in a good condition.



BIKER FASHION