



● Thank you for purchasing our product. Before installing, please read the instruction carefully and keep it for future reference.

⚠ Attention!

- For installation, follow the steps on the instruction sheet. Any damage caused by faulty installation shall be imputed to the users.
- Don't break or modify the wires. To avoid a short circuit, do not pull the wires out of the terminals during installing.
- Do not disassemble, alter or change any parts.
- Maintenance or repairs should be executed by our professionals.

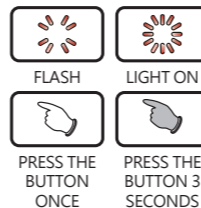
◎ MARK MEANING:

NOTE You could get the installation details from the information behind the mark.

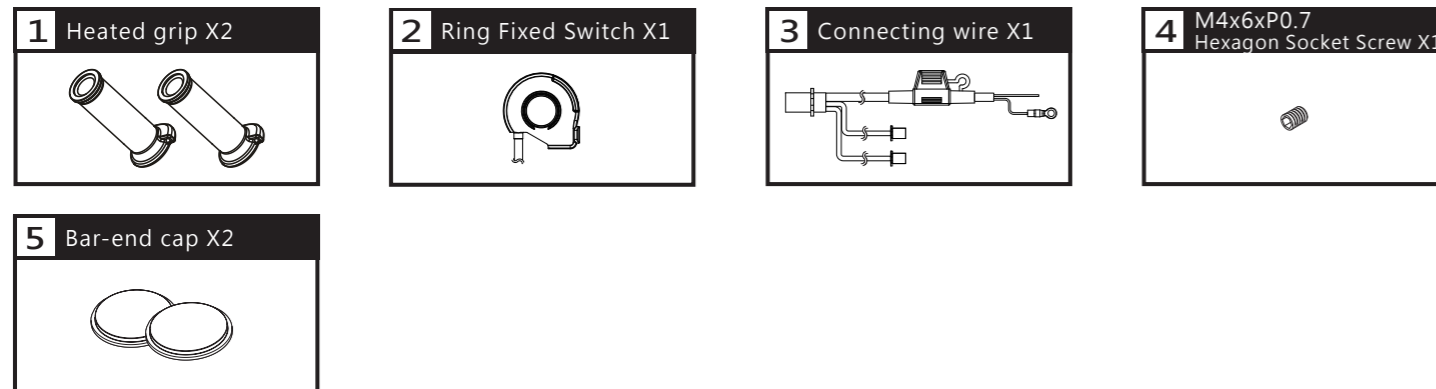
⚠ Some processes must be followed to avoid the affection caused by wrong installation.

⚠ **WARNING!** Certain procedure must be followed to avoid damages to yourself or the public.

⚠ **CAUTION!** Certain procedure must be followed to avoid damages to the vehicle.

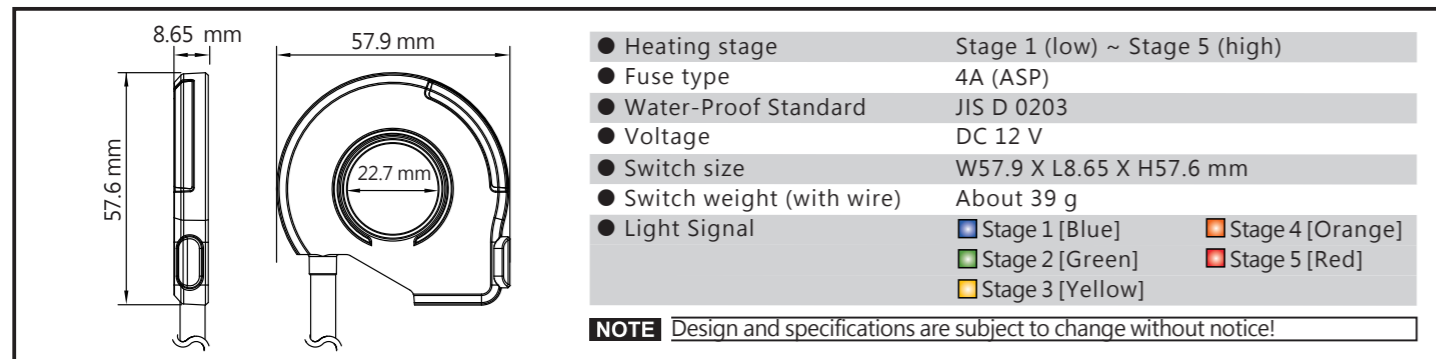


1 Accessories

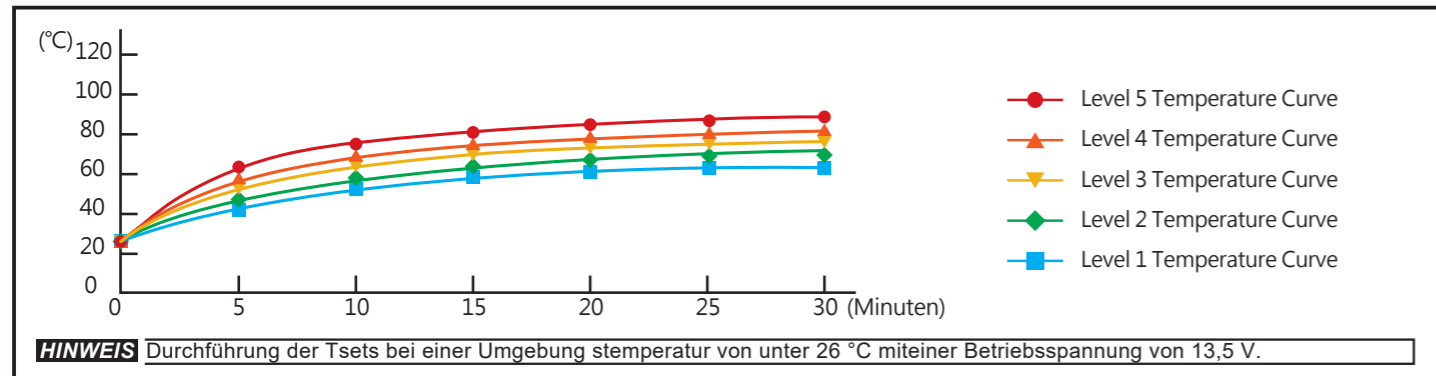


NOTE Contact your local distributor if the items received in the box are not the same as the one listed above.

2-1 Specifications

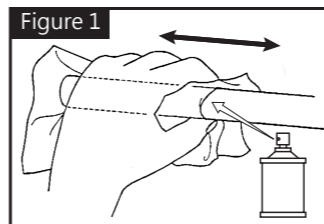


2-2 Heated grip testing data

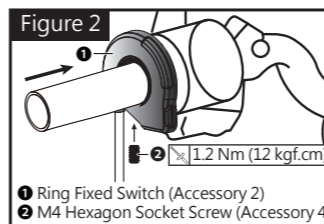


3-1 Practical installation instruction

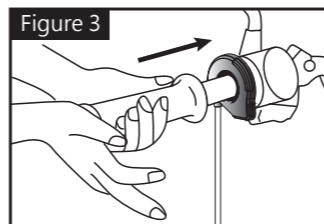
Follow the steps below during installation.



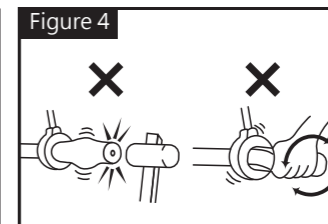
1. Use an appropriate tool to remove the original handle-bar grips.
2. Apply a cleaning agent and wipe back and forth to remove the glue residue from the handlebar.



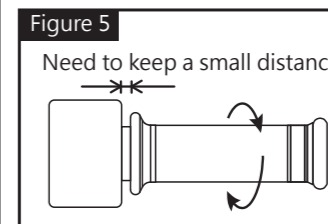
3. Please use an appropriate tool to affix the ring fixed switch (Accessory 2) to the handle.
- CAUTION!** Please adjust the angle during the installation to prevent interfering the button.



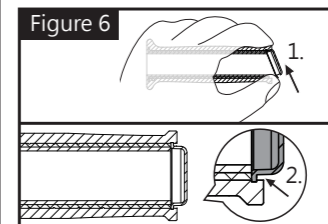
4. Push the heated grip (Accessory 1) straight onto the handlebar.
- NOTE** If the heated grip is not fastened firmly enough to the handlebars, apply a little heated grip adhesive (sold separately) to prevent it from twisting whilst on the road.



CAUTION!
To install, do not use any tool to knock the grip on direct. Do not twist the grip by hand or with a tool. By doing so, this will break or damage the wire inside the handlebar.

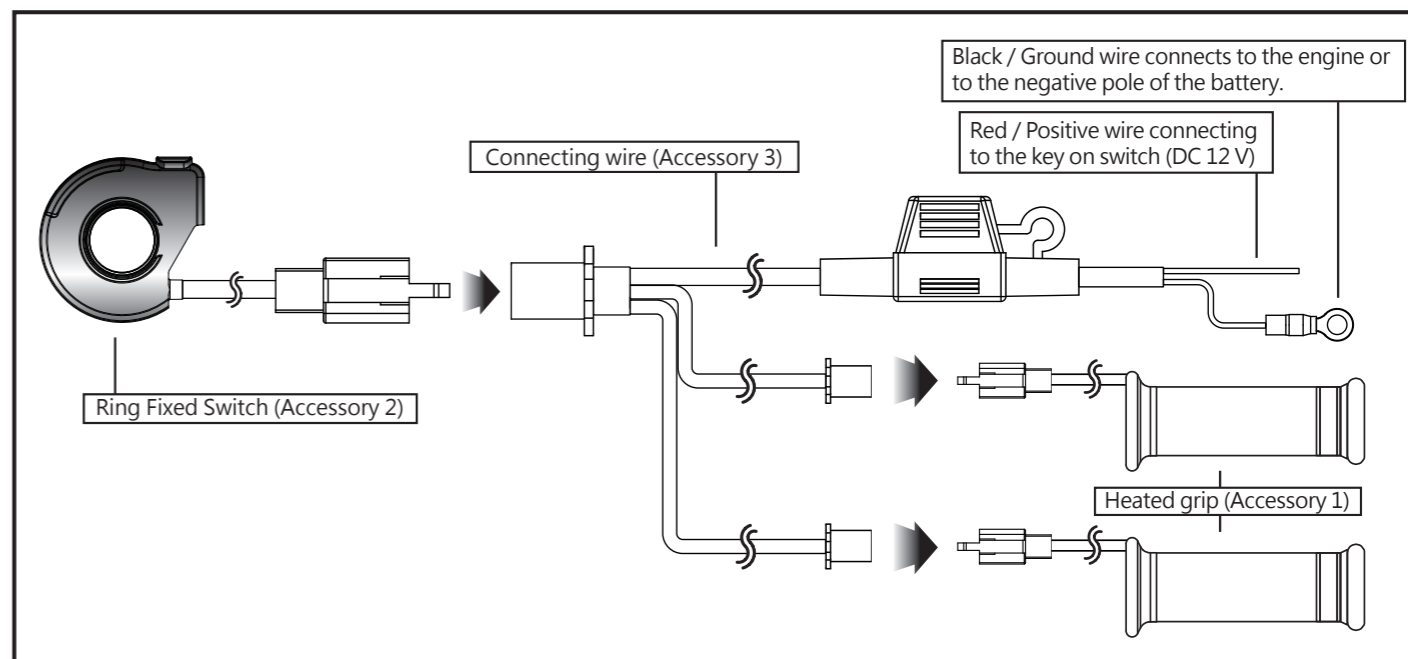


CAUTION!
To install the heating grip (Accessory 1) onto the throttle sleeve, the throttle must maintain a small distance with a surplus distance for wiring; You must test them by rotating back and forth to make sure they can twist.



5. To install the side cap (Accessory 5) onto the heating grip, insert the top cap into the top groove and then press it downward into the bottom groove.

3-2 Wiring installation instructions



EN ⚠ **Caution!** Risk of burns! The heated grips can reach very high temperatures. The heated grips may only be used with suitable hand protection.

DE ⚠ **ACHTUNG!** Verbrennungsgefahr. Die Heizgriffe können sehr hohe Temperaturen erreichen. Die Heizgriffe dürfen nur mit geeignetem Schutz für die Hände verwendet werden.

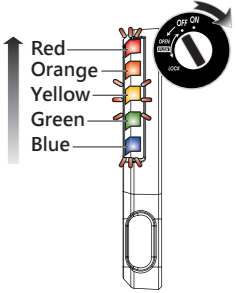
ES ⚠ **Atención!** Riesgo de quemaduras. Los puños calefactables pueden alcanzar temperaturas muy elevadas. Los puños calefactables deben utilizarse únicamente en combinación con una protección adecuada para las manos.

FR ⚠ **Attention!** Risque de brûlure! Les poignées chauffantes peuvent atteindre des températures très élevées. Les poignées chauffantes doivent uniquement être utilisées avec une protection adaptée pour les mains.

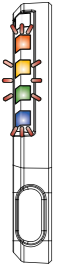
IT ⚠ **Attenzione!** Rischio di ustioni! Le manopole riscaldate possono raggiungere temperature molto elevate. È consentito utilizzare le manopole riscaldate solo con una protezione per le mani adatta.

NL ⚠ **Pas op!** Gevaar voor brandwonden! De verwarmde handvaten kunnen zeer hoge temperaturen bereiken. De verwarmde handvaten mogen alleen met een geschikte handbescherming worden gebruikt.

4-1 Function setting instruction

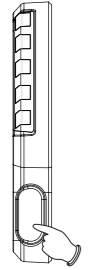


- Key on, enter the power pressure detecting mode.
- ⚠ The LED would show lightings in the direction from blue light to red light at this moment.

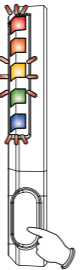


- The corresponding light signal would be shown according to the power pressure detected.
- NOTE** When the corresponding power pressure is shown, the light would flicker three times.

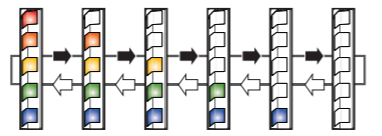
Heat up stage	Voltage
Blue(Stage 1)	Below 11.0 V
Green(Stage 2)	11.1 ~ 11.5 V
Yellow(Stage 3)	11.6 ~ 12.0 V
Orange(Stage 4)	12.1 ~ 12.5 V
Red(Stage 5)	Over 12.6 V



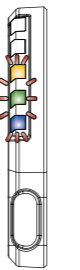
- Standby mode, press the button once to enter into the heating mode.
- NOTE** After starting the grip, the heat up function will not commence without pressing the button.



- Press the button, then select your desired value.
- EX : The heat up stage was adjusted from stage 5 to stage 3.
- ⚠ The heat up will begin with red LED light (stage 5) upon entering the heat up mode.
- NOTE** Stage 5(high)→Stage 4→Stage 3→Stage 2→Stage 1(low)→OFF.

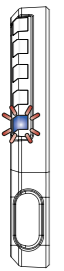


- ⚠ When the button remained idle for 5 seconds, the stage shifting will start from red LED light (stage 5) after pressing the button.



- EX : The heat up stage is stage 3 heat up.

4-2 Low-voltage mode Description



- The heating system will be turned off automatically when the voltage is lower than 11.5 V.
- ⚠ At this moment, LED flashes, it will shift back to standby mode after 10 seconds.
- Standby mode will be enabled when the voltage over 11.5 V is restored.

5 Trouble shooting

The following situation do not indicate malfunction of the meter. Please check the following points, before taking it in for repair.

Trouble	Check item	Trouble	Check item
LED indication does not activate.	<ul style="list-style-type: none">● Power supply cable disconnected. → Please check if power supply cable is broken or disconnected. → Please check if positive and negative poles are properly connected.● It might be the fuse blown out. → Please check if the fuse is in normal state.	When turn the key on, the headed grip is not heating up.	<ul style="list-style-type: none">● It might be the battery is running out. → Please check your battery voltage as soon as possible.● It might be causing by no power supply. → Please check if power harness and fuse broken or disconnected. → Please check if positive pole and negative pole is well connected.

※ If the problems still can't be solved, please contact your local distributor to get assistance.