



# LubeTube

To register your product and activate your guarantee/warranty please visit [www.scottoiler.com/guarantee](http://www.scottoiler.com/guarantee)



## Technical Support



technical@scottoiler.com +44 (0) 141 955 1100



YouTube



flickr

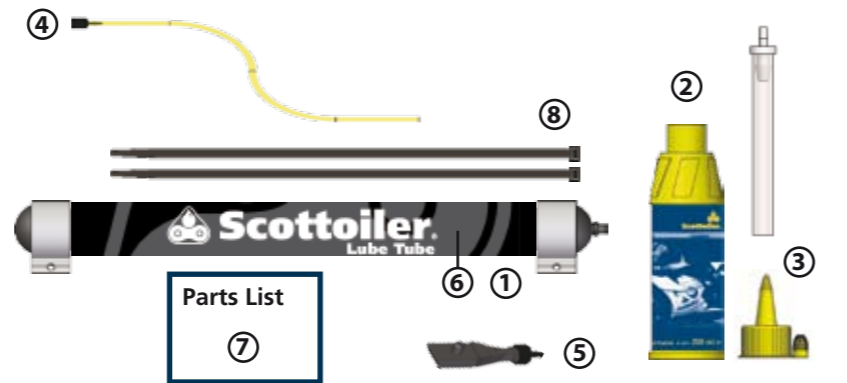
Visit our pages on Facebook, YouTube, Twitter or flickr

V2.0

### 1. Parts List

**Hint:** Model specific guides are available on the website [www.scottoiler.com](http://www.scottoiler.com)

1. Lube Tube
2. Scottoil, 250ml
3. Spouted cap and spout tube assembly
4. Siphon tube with connector
5. Filler plug with luer and connector
6. High strength nylon sleeve (Protects your Lube Tube from puncture or tear)
7. Fitting instruction
8. Cable ties x2



**General Hints:** Decide where you wish to position the Lube Tube, but fill and prime your existing system before fitting the Lube Tube for ease of installation.

For best performance, Lube Tube should be placed no higher than the RMV. If placed too high, the reservoir may continue to flow even when the bike isn't running. It can be placed at the same height as the RMV but no lower than 10 cm below the reservoir. If placed too low, it will not refill the RMV.

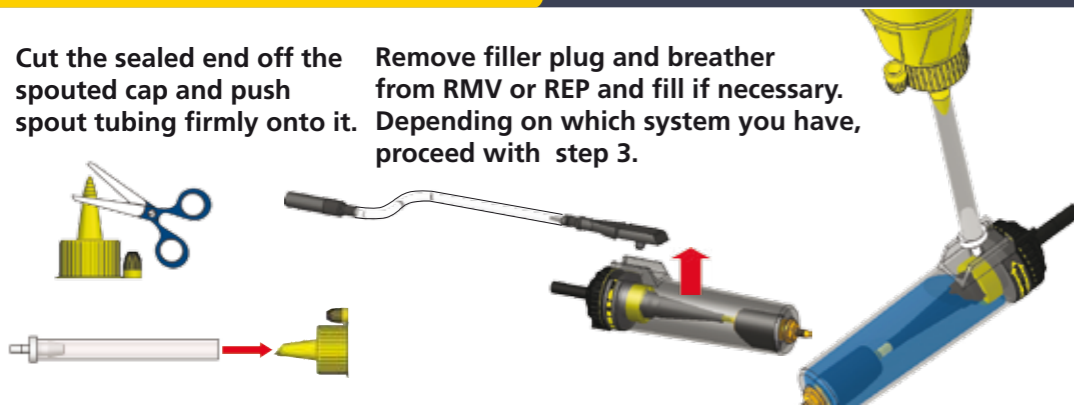
**Tip:-** If oil is not siphoned into the RMV after installation, then the most likely reason for this is that air is able to get into one of the connections on the Lube Tube installation.

Ensure that the fillerplug is properly fitted to the reservoir by making sure the nipple part is pushed properly into hole in the reservoir and that the fillerplug lies flat and mates against the side of the reservoir.

### 2. Fill Reservoir RMV / REP

Cut the sealed end off the spouted cap and push spout tubing firmly onto it.

Remove filler plug and breather from RMV or REP and fill if necessary. Depending on which system you have, proceed with step 3.



### 3. Prime the System

If the delivery tubing is empty:- Remove filler plug and breather from RMV. Using the new filler plug in the Lube Tube kit, press it into the side of the RMV, and set RMV to Prime.

Remove twist lock connector from filler plug.

Connect the spout to the filler plug and squeeze the bottle to force oil down the delivery line until no air bubbles remain.

**OR** If fitting to an eSystem, if delivery tubing is empty:-

Navigate to the 'Prime' menu on the eSystem display unit. Press 'set' to run a prime cycle for 60 seconds. Repeat this step until oil starts to drip from the nibs.



### 4. Lube Tube Filling



Decide where you are going to position the Lube Tube BEFORE filling. AVOID moving or hot components and seat parts.

Fill the Lube Tube to approximately 5cm from the top.

If in doubt, underfill, it can always be topped up when in position on the bike.

**Hint:** Expell air from the Lube Tube before filling, and don't overfill.

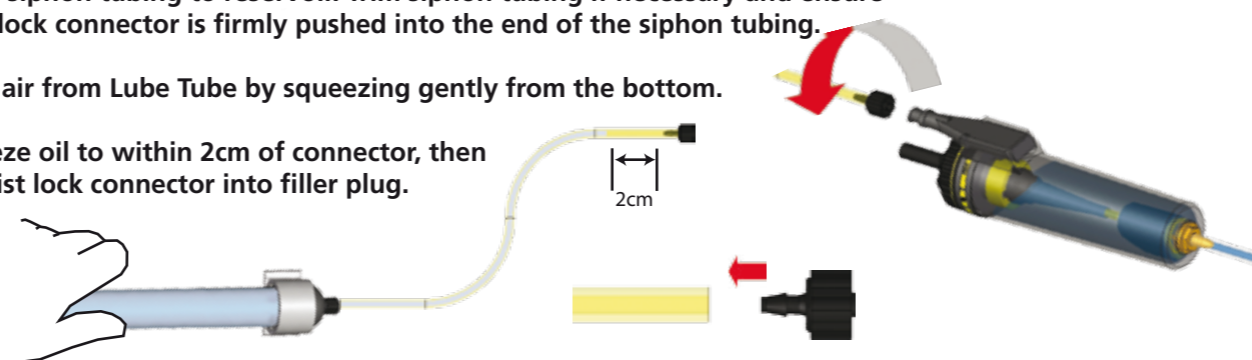
Connect the siphon tube to the top of the Lube Tube - twist to secure.

This will avoid risk of spillage.

Route siphon tubing to reservoir. Trim siphon tubing if necessary and ensure twist lock connector is firmly pushed into the end of the siphon tubing.

Expel air from Lube Tube by squeezing gently from the bottom.

Squeeze oil to within 2cm of connector, then fit twist lock connector into filler plug.



Position Lube Tube. It can be fitted under the seat, inside a fairing panel, or in tail fairing.

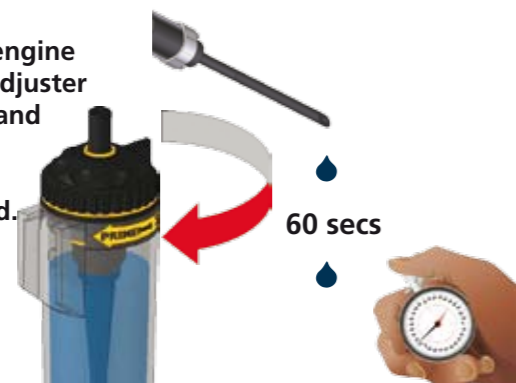
The Lube Tube can be mounted by securing the sleeved ends to a frame section using cable ties.

**Hint:** The breather end should be uppermost.

### 5. Set Flow Rate (RMV)

For RMV:- Start your bike, allow the engine to warm up. Set the flow adjuster to half way between Max and Min. Time the drops and adjust the flow until 1 drop per minute is achieved.

Check flow after a short journey, and adjust if necessary.



### 6. Set REP level and flow rate

Navigate to the Additional Reservoir Menu, then cycle through the available additional capacity reservoirs and let the eSystem know its new capacity.



**Hint:** When an additional reservoir is in place the oil level gauge will display the overall capacity of the system.

When both the eSystem reservoir and the Lube Tube are full the oil level should be set to 100%.

NB if Lube Tube is not fully filled adjust percentage as appropriate.

Finally, navigate to the 'Driving Screen'. Use the button to cycle through the desired flow rate until 60-70 seconds per drop (s/dp) is shown. Check chain condition after a short journey and adjust as necessary.

