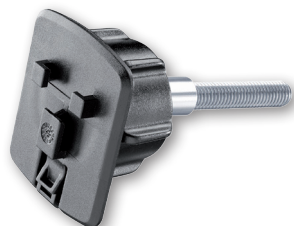


MOUNT FOR CASES

SMRISER

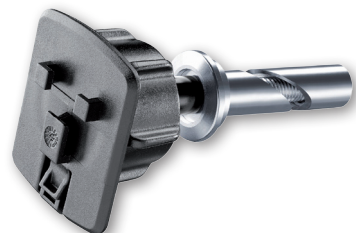


OPTIONAL SCREW-ON SUPPORT FOR PROCASE AND UNICASE CASES

Description

- Riser support with M8 x 55/60/65 mm bolts
- Quick attach/release system
- 360° rotation support
- Ideal for high half handlebar/riser

SMSTEERING15

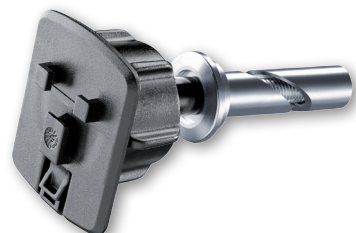


OPTIONAL SCREW-ON SUPPORT FOR PROCASE AND UNICASE CASES

Description

- Support for steering column with 15 to 17.2 mm diameter
- Quick attach/release system
- 360° rotation support
- Ideal for sports motorbikes

SMSTEERING17



OPTIONAL SCREW-ON SUPPORT FOR PROCASE AND UNICASE CASES

Description

- Support for steering column with 17 to 20.5 mm diameter
- Quick attach/release system
- 360° rotation support
- Ideal for sports motorbikes

ARTICLE CODE
SMRISER

PACK

Pack height	Pack width	Pack depth
17.5 cm	10 cm	5 cm

EAN CODE
8018080285592

ARTICLE CODE
SMSTEERING15

PACK

Pack height	Pack width	Pack depth
17.5 cm	10 cm	5 cm

EAN CODE
8018080285608

ARTICLE CODE
SMSTEERING17

PACK

Pack height	Pack width	Pack depth
17.5 cm	10 cm	5 cm

EAN CODE
8018080285622