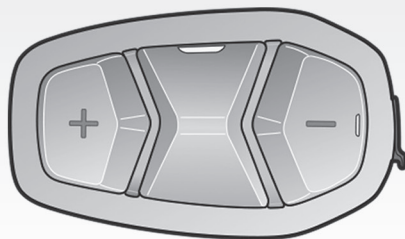


LSE-01

Motorcycle Bluetooth®
Communication System



CONTENTS

Safety Precautions	4	7 STEREO MUSIC	23
1 INTRODUCTION	6	7.1 Bluetooth Stereo Music	23
2 PACKAGE CONTENTS	7	7.2 Music Sharing	23
3 INSTALLING THE LSE-01 ON YOUR HELMET	8	8 INTERCOM	24
3.1 Installing the Main Unit	8	8.1 Two-way Intercom	24
3.2 Installing the Speakers	11	8.2 Three-way Intercom	25
3.3 Installing the Microphones	11	8.3 Four-way Intercom	27
4 GETTING STARTED	13	9 THREE-WAY CONFERENCE PHONE CALL WITH INTERCOM PARTICIPANT	28
4.1 Button Operation	13	10 GROUP INTERCOM	29
4.2 Powering On and Off	13	11 UNIVERSAL INTERCOM	30
4.3 Charging	13	11.1 Universal Intercom Pairing	31
4.4 Checking the Battery Level	14	11.2 Two-way Universal Intercom	31
4.5 Volume Adjustment	14	11.3 Three-way Universal Intercom	32
4.6 Muting the Microphone	14	11.4 Four-way Universal Intercom	33
4.7 Sena Softwares	15	12 FM RADIO	35
5 PAIRING THE LSE-01 WITH BLUETOOTH DEVICES	15	12.1 FM Radio On and Off	35
5.1 Mobile Phone Pairing - Mobile Phone, Bluetooth Stereo Device	15	12.2 Preset Stations	35
5.2 Second Mobile Phone Pairing - Second Mobile Phone, GPS, and SR10	16	12.3 Seek and Save	36
5.3 Advanced Selective Pairing - A2DP Stereo or Handsfree	17	12.4 Scan and Save	36
5.4 Intercom Pairing	18	12.5 Temporary Preset	37
6 MOBILE PHONE, GPS, SR10	20	12.6 FM Sharing	37
6.1 Mobile Phone Call Making and Answering	20	12.7 Region Selection	37
6.2 Speed Dialing	21	13 FUNCTION PRIORITY	38
6.3 GPS Navigation	22		
6.4 Sena SR10, Two-Way Radio Adapter	22		

14 HEADSET CONFIGURATION SETTINGS.....	39	17 TROUBLESHOOTING	47
14.1 Mobile Phone Pairing	40	17.1 Fault Reset.....	47
14.2 Second Mobile Phone Pairing	40	17.2 Factory Reset	47
14.3 GPS Pairing	40	18 QUICK OPERATION REFERENCE	47
14.4 Phone Selective Pairing	40	CERTIFICATION AND SAFETY APPROVALS	48
14.5 Media Selective Pairing	41	• FCC Compliance Statement.....	48
14.6 Delete All Bluetooth Pairing Information	41	• FCC RF Exposure Statement.....	49
14.7 Remote Control Pairing	41	• FCC Caution	49
14.8 Universal Intercom Pairing	41	• CE Declaration of Conformity	49
14.9 Factory Reset	42	• Industry Canada Statement	49
14.10 Exit Voice Configuration Menu	42	• Bluetooth License	50
15 SOFTWARE CONFIGURATION SETTINGS	43	• WEEE (Waste Electrical and Electronic Equipment).....	50
15.1 Assigning Speed Dial	43	LIMITED PRODUCT WARRANTY DISCLAIMERS, and LIMITATIONS.....	50
15.2 Setting Audio Source Priority (Default: Intercom).....	43	• Limited Warranty	50
15.3 Enabling/Disabling Audio Boost (Default: Disable).....	43	• Warranty Exclusions	52
15.4 Enabling/Disabling Smart Volume Control (Default: Disable)	43	• Warranty Service.....	53
15.5 Enabling/Disabling Voice Activated Phone Answering (Default: Enable).....	43		
15.6 Enabling/Disabling Voice Activated Intercom (Default: Disable).....	44		
15.7 Enabling/Disabling HD Intercom (Default: Enable)	44		
15.8 Setting Intercom VOX Sensitivity (Default: 3).....	44		
15.9 Enabling/Disabling Voice Prompts (Default: Enable)	45		
15.10 Enabling/Disabling RDS AF (Default: Disable).....	45		
15.11 Enabling/Disabling FM Station Guide (Default: Enable).....	45		
15.12 Enabling/Disabling Sidetone (Default: Disable)	45		
15.13 Enabling/Disabling Advanced Noise Control™ (Default: Enable)	46		
16 FIRMWARE UPGRADE	46		

Safety Precautions

Please ensure that the product is properly used by observing the safety precautions below to prevent any risk of serious injury, death and/or damage to property.

Hazard alert signal words

The following safety symbols and signal words are used in this manual.



WARNING

Indicates a potential hazardous situations that, if not avoided, could result in death or serious injury.



CAUTION

Indicates a potential hazardous situation that, if not avoided, could result in minor or moderate injury.

NOTICE

Indicates information considered important, but not hazard-related. If not avoided, it could cause damage to your product.

Note

Notes, usage tips, or additional information

Product Use

Observe the following precautions to avoid injury or damage to your product while using the product.



WARNING

- If the product emits an unusual smell, feels hot, or appears abnormal in any other way while using or charging, stop using it immediately. It may cause damage, explosion, or fire. Contact your sales location if any of these problems are observed.
- Careless use of the product is risky and may result in serious injury, death or damage. You must heed all safety precautions in all documents that come with this product. This will help minimize the chance these risks may occur.
- Do not use the product in an explosive atmosphere. If you are in such a location, turn off the power and heed any regulations, instructions, and signs in the area.
- Do not use the product in direct sunlight for a long period of time. Doing so can damage the product and generate heat that can cause burns.

NOTICE

- Do not impact the product with sharp tools as this may damage the product.
- Keep product away from pets or small children. They may damage the product.
- Any changes or modifications to the equipment not expressly approved by the party responsible for compliance could void the limited warranty to operate the equipment.

Product Storage and Management

Take the following precautions to avoid personal injury or damage to your product while storing and maintaining the product.

**CAUTION**

- Do not dispose of the product with household waste. Disposal of the product should be done in accordance with the local regulations.

NOTICE

- Keep the product free of dust. Dust may damage mechanical and electronic parts of the product.
- The product should be stored at room temperature. Do not expose the product to extremely high or low temperature as this may reduce the life span of electronic devices, and/or melt plastic parts of the product.
- Do not clean the product with cleaning solvents, toxic chemicals, or strong detergents as this may damage the product.
- Do not paint the product. Paint may obstruct moving parts or interfere with the normal operation of the product.
- Do not drop or otherwise shock the product. It may damage the product or its internal electronic circuits.
- Do not disassemble, repair or modify the product as this may damage the product and invalidate the product warranty.
- Do not store the product in humid environments, especially for long periods of time. It may damage the internal electronic circuits.

1 INTRODUCTION

Thank you for choosing the Louis LSE-01, Bluetooth Stereo Headset and Intercom. With the LSE-01, you can call handsfree on your Bluetooth mobile phone or listen to stereo music or voice instructions of GPS navigations wirelessly. Please read this User's Guide carefully before using the headset.

The LSE-01 features:

- Bluetooth 4.1
- Bluetooth intercom up to 1.2 kilometers (0.8 miles)*
- Four way intercom
- Three-way conference phone call with intercom participant
- SF Utility App for iPhone and Android phones
- Built-in FM radio tuner with a station scan and save function
- FM Sharing
- Music Sharing
- Advanced Noise Control™
- Microphone mute option

- Smart Volume
- Universal Intercom™
- Group Intercom™
- HD quality crystal clear and natural sound
- Bluetooth Audio Recording™
- Firmware upgradeable
- Water resistant

* In open terrain

Key Specifications:

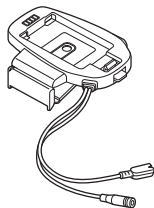
- Bluetooth 4.1
- Supporting profiles: Headset Profile, Hands-Free Profile (HFP), Advanced Audio Distribution Profile (A2DP), and Audio Video Remote Control Profile (AVRCP).

2 PACKAGE CONTENTS

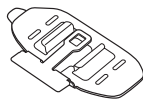
- **Headset Main Unit**



- **Clamp Kit**



- **Glued Surface Mounting Adapter**



Speaker

- **Speakers**



- **Hook and Loop Fasteners for Speakers (2)**



Wired Boom Microphone

- **Wired Boom Microphone**



- **Hook and Loop Fastener for Boom Microphone**



- **Microphone Sponges (2)**



- **Boom Microphone Holder**



- **Hook and Loop Fastener for Holder**



Wired Microphone

- **Wired Microphone**



- **Hook and Loop Fastener for Wired Microphone**



Others

- **USB Power & Data Cable (Micro USB Type)**

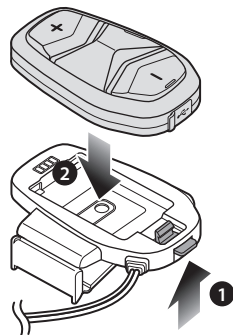


3 INSTALLING THE LSE-01 ON YOUR HELMET

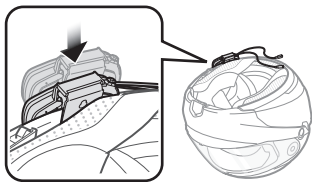
3.1 Installing the Main Unit

3.1.1 Installing the Clamp Kit to the Main Unit

1. Push and hold the clamp kit's tab upwards. While pushing the tab, insert the main unit into the clamp kit.



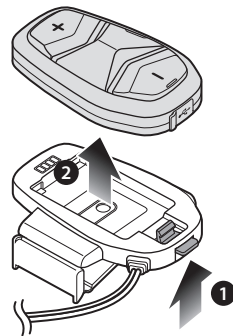
2. Insert the back plate of the clamp kit between the internal padding and external shell on the left side of the helmet.



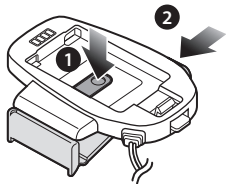
3.1.2 Using the Glued Surface Mounting Adapter for the Main Unit

If the clamp kit is not inserted into the helmet firmly, you can use the glued surface mounting adapter.

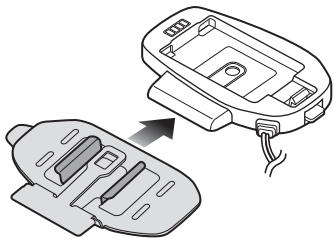
1. Make sure that the main unit is separated from the clamp kit. If not, push and hold the clamp kit's tab upwards and remove the main unit from the clamp kit.



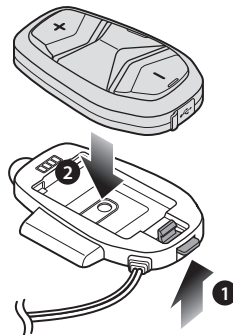
2. While pushing the latch at the center of the clamp kit, push the back plate of the clamp kit outwards to remove it.



3. Align the glued surface mounting adapter and the back of the clamp kit and slide the adapter into the clamp kit until you hear a click. Make sure that the glued surface mounting adapter fits the back of the clamp kit's grooves.

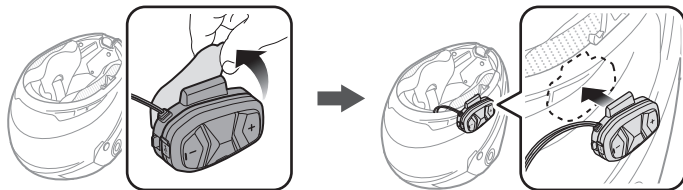


4. Push and hold the clamp kit's tab upwards. While pushing up the tab, insert the main unit into the clamp kit.



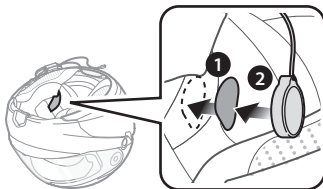
5. Clean the area on the left side of the helmet where you will attach the glued surface mounting adapter with a moistened towel and dry thoroughly.

6. Peel off the glued cover and attach the main unit on the left side of your helmet.

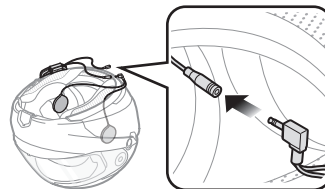


3.2 Installing the Speakers

1. Peel off each cover of the hook and loop fasteners for the speakers to expose the adhesive surface.
2. Attach the fasteners to the ear pockets inside the helmet, and then attach the speakers to the fasteners.



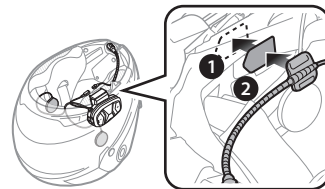
3. Connect the speaker cable to the speaker connector.



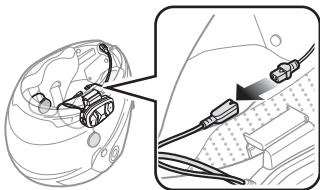
3.3 Installing the Microphones

3.3.1 Using the Wired Boom Microphone

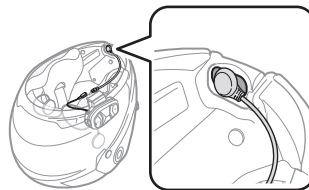
1. Peel off the cover of the hook and loop fastener for the wired boom microphone to expose the adhesive tape.
2. Attach the hook and loop fastener on the inside surface of the left external shell, and then attach the wired boom microphone's mounting plate to the hook and loop fastener.



3. Align the arrows on the main unit and microphone cables and insert the microphone cable into the microphone connector.

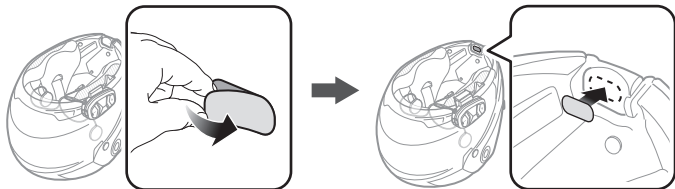


2. Attach the wired microphone to the hook and loop fastener for the wired microphone.

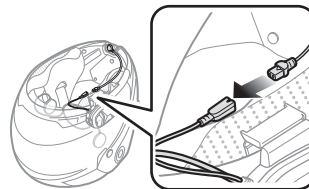


3.3.2 Using the Wired Microphone

1. Peel off the cover of the hook and loop fastener for the wired microphone to expose the adhesive tape. Then, attach the hook and loop fastener on the inside of the helmet's chin guard.

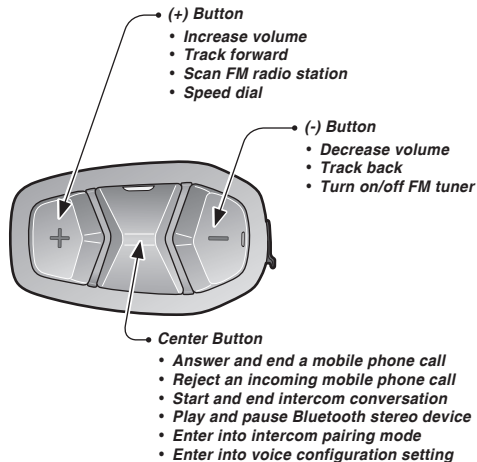


3. Align the arrows on the main unit and microphone cables and insert the microphone cable into the microphone connector.



4 GETTING STARTED

4.1 Button Operation

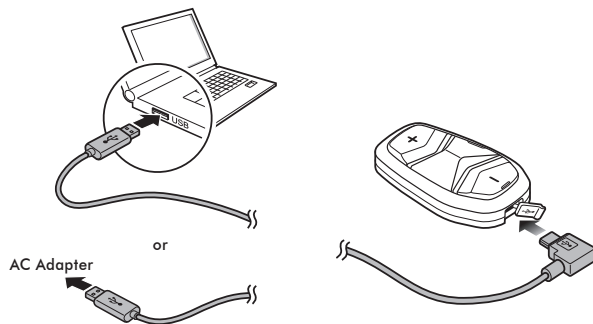


4.2 Powering On and Off

To power on the headset, press the Center Button and the (+) Button at the same time for 1 second while hearing ascending beeps and a voice prompt, **"Hello"**. To power off the headset, tap the Center Button and the (+) Button at the same time while hearing descending beeps and a voice prompt, **"Goodbye"**.

4.3 Charging

You can charge the headset by connecting the supplied USB power & data cable into a computer's USB port or USB wall charger. You can use any standard micro USB cable to charge the unit. The charging LED turns red while charging and turns blue when fully charged. It takes about 1.5 hours to be completely charged.



4.4 Checking the Battery Level

4.4.1 LED Indicator

When the headset is powering on, the red LED flashes rapidly indicating the battery level.

4 flashes = High, 70 ~ 100%

3 flashes = Medium, 30 ~ 70%

2 flashes = Low, 0 ~ 30%

4.4.2 Voice Prompt Indicator

When you power on the headset, keep pressing the Center Button and the (+) Button simultaneously for about 5 seconds. Then you will hear a voice prompt indicating the battery level. However, if you release the buttons as soon as the headset turns on, you will not hear a voice prompt for the battery level indication.

4.5 Volume Adjustment

You can easily adjust the volume by tapping the (+) Button or the (-) Button. The volume is set and maintained independently at different levels for each audio source even when you reboot the headset. For example, once you set the volume for mobile phone handsfree, it will not change even if you adjust the volume for your Bluetooth MP3 music. However, if you adjust the volume during stand-by mode, it will affect volume levels of every audio source.

4.6 Muting the Microphone

To mute or unmute the microphone, press and hold the Center Button and the (-) Button for 1 second. When the microphone is muted, you will hear ascending beeps every 10 seconds. When you unmute the microphone, you will hear descending beeps and the microphone will be active.

4.7 Sena Softwares

4.7.1 Sena Device Manager

The Sena Device Manager allows you to upgrade the firmware and configure the device settings directly from your PC. Using this software, you can assign speed dial presets, FM radio frequency presets and more. It is available for both Windows and Mac. For more information on downloading the Device Manager, please visit www.sena.com.

4.7.2 Sena SF Utility App

The Sena SF Utility App allows you to configure device settings and read the User's Guide and the Quick Start Guide. Pair your phone with your LSE-01 headset (please refer to *section 5.1, "Mobile Phone Pairing - Mobile Phone, Bluetooth Stereo Device"*). Run the Sena SF Utility App and you can configure its settings directly from your smartphone. You can download the Sena SF Utility App for Android or iPhone from www.sena.com.

5 PAIRING THE LSE-01 WITH BLUETOOTH DEVICES

Before using the LSE-01 Bluetooth headset with any other Bluetooth devices for the first time, you will need to pair them together. You can pair the LSE-01 with Bluetooth mobile phones, Bluetooth stereo devices such as MP3 players, or motorcycle specific Bluetooth GPS navigation, and with other Sena Bluetooth headsets. The pairing operation is required only once for each Bluetooth device. The headset remains paired with the devices and automatically reconnects to them when they are within range. You will hear a high-toned single beep and a voice prompt whenever the headset reconnects to the paired device: **"Phone connected"** to a mobile phone, **"Media connected"** to a Bluetooth stereo device.

5.1 Mobile Phone Pairing - Mobile Phone, Bluetooth Stereo Device

1. To enter the voice configuration menu, press and hold the Center Button for 10 seconds until you hear the voice prompt, **"Configuration menu"**.
2. By tapping the (+) Button, you will hear the voice prompt, **"Phone pairing"**.

3. Search for Bluetooth devices on your mobile phone. Select the Louis LSE-01 in the list of the devices detected on the mobile phone.
4. Enter 0000 for the PIN. Some mobile phones may not ask for the PIN.
5. The mobile phone confirms that pairing has completed and the LSE-01 is ready to use. You will hear a voice prompt, **“Your headset is paired”**.
6. If the pairing process is not completed within three minutes, the LSE-01 will return to stand-by mode.

Note:

1. If a Bluetooth connection between the headset and a mobile phone is disconnected, press the Center Button for 3 seconds until you hear a high-toned single beep to recover the Bluetooth connection immediately.
2. If the Bluetooth connection between the headset and a media player is disconnected, press the Center Button for 1 second to recover the Bluetooth connection and play.

5.2 Second Mobile Phone Pairing - Second Mobile Phone, GPS, and SR10

Typical Bluetooth headsets can connect with only one Bluetooth device, but a second mobile phone pairing allows the headset to connect with another Bluetooth device such as a second mobile phone, an MP3 Player, or the Sena SR10, the Bluetooth adapter.

1. To enter the voice configuration menu, press and hold the Center Button for 10 seconds until you hear the voice prompt, **“Configuration menu”**.
2. Tap the (+) Button until you hear a voice prompt, **“Second mobile phone pairing”**.
3. Search for Bluetooth devices on your mobile phone. Select the Louis LSE-01 in the list of the devices detected on the mobile phone.
4. Enter 0000 for the PIN. Some mobile phones may not ask for the PIN.
5. The mobile phone confirms that the pairing has completed and the LSE-01 is ready to use. You will hear a voice prompt, **“Your headset is paired”**.

Note:

- 1. If you have two audio (A2DP) devices connected to your headset then the audio from one device will interrupt the audio from the other device. For example, if you are playing music from the primary mobile phone, then it can be interrupted by playing music from the secondary mobile phone and vice versa.*
- 2. You have to use a motorcycle specific GPS, which transmits turn-by-turn voice instructions to the headset by Bluetooth. Most automotive GPS systems do not have this feature.*
- 3. The Sena SR10 is a Bluetooth two-way radio adapter for group communication, and uses Hands-Free Profile. The incoming audio from the two-way radio via SR10 is heard in the background while having an intercom conversation or a mobile phone call.*
- 4. The GPS navigation or a radar detector could be connected to the SR10 by wire. The GPS voice instruction or the radar detector alarm is also heard in the background via SR10 while having an intercom conversation or a phone call. Please refer to the SR10 User's Guide for details.*

5.3 Advanced Selective Pairing - A2DP Stereo or Handsfree

When you are using a smartphone, sometimes you may need to selectively use the LSE-01 for A2DP stereo music only or for mobile phone handsfree only. These instructions are for advanced users who want to pair the LSE-01 to their smartphones with only one selective profile: A2DP for stereo music or HFP for phone calls.

If you have previously paired a mobile phone to the LSE-01, you must clear the previous pairing list on both devices: the mobile phone and the LSE-01. To clear the pairing list on the LSE-01, please do a factory reset or following the pairing list clearing procedure described in section 14.9, "Factory Reset" or 14.6, "Delete All Bluetooth Pairing Information". To clear the pairing list on the mobile phone, please refer to the mobile phone manual. For most smartphones, delete the Louis LSE-01 from the list of Bluetooth devices in the settings menu.

5.3.1 A2DP Stereo Music Only

1. To enter the voice configuration menu, press and hold the Center Button for 10 seconds until you hear the voice prompt, **“Configuration menu”**.
2. Tap the (+) Button until you hear the voice prompt, **“Media selective pairing”**.
3. Search for Bluetooth devices on your smartphone. Select the Louis LSE-01 in the list of devices detected on your phone.
4. Enter 0000 for the PIN. Some mobile phones may not ask for the PIN.

5.3.2 HFP for Phone Call Only

1. To enter the voice configuration menu, press and hold the Center Button for 10 seconds until you hear the voice prompt, **“Configuration menu”**.
2. Tap the (+) Button until you hear the voice prompt, **“Phone selective pairing”**.
3. Search for Bluetooth devices on your smartphone. Select the Louis LSE-01 in the list of devices detected on your phone.
4. Enter 0000 for the PIN. Some mobile phones may not ask for the PIN.

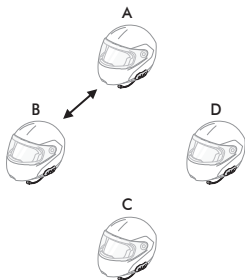
5.4 Intercom Pairing

5.4.1 Pairing with Other LSE-01 Headsets for Intercom Conversation

The headset can be paired with up to three other headsets for Bluetooth intercom conversation.

1. Turn on the two headsets (A and B) that you would like to pair with each other.
2. Press and hold the Center Button for 5 seconds, then you will hear a mid-toned single beep and the voice prompt, **“Intercom pairing”**.

- Simply tap the Center Button of any one of the two headsets A or B and wait until the intercom connection is automatically established. The two headsets A and B are paired with each other for intercom conversation. If the pairing process is not completed within one minute, the headsets will return to stand-by mode.



Pairing A & B

- You can make other pairing between headsets A and C, and between headsets A and D by following the same procedure as above.
- The intercom pairing queue is '**Last-Come, First-Served**'. If a headset has multiple paired headsets for intercom conversations, the last paired headset is set as **first intercom friend**. The previous intercom friend becomes **second intercom friend**, and **third intercom friend**.

Note:

For example, after the pairing procedures listed above, headset D is the **first intercom friend** of headset A. Headset C is the **second intercom friend** of headset A, and headset B is the **third intercom friend** of headset A.

5.4.2 Pairing with Other Sena Headset Models for Intercom Conversation

The LSE-01 can be paired with all other Sena headset models such as the 20S, SMH10 and the SMH5 for intercom conversation. Please follow the same procedure as above to pair with these headset models.

Note:

The SMH5 cannot participate in three-way or four-way conference intercom with the LSE-01. The SMH5 has a limited capability of having two-way intercom with other Sena headsets.

6 MOBILE PHONE, GPS, SR10

6.1 Mobile Phone Call Making and Answering

1. When you have an incoming call, tap the Center Button to answer the call.
2. You can also answer the incoming call by loudly speaking any word of your choice if *Voice Activated Phone Answering* (VOX Phone) is enabled, unless you are connected to intercom.
3. To end a call, press the Center Button for 2 seconds until you hear a mid-tone single beep, or wait for the called person to end the call.
4. To reject a call, press the Center Button for 2 seconds until you hear a beep while the phone is ringing.
5. There are several ways to make a phone call:
 - Enter numbers on your mobile phone's keypad and make a call. Then the call is automatically transferred to the headset.
 - In stand-by mode, press the Center Button for 3 seconds, to activate the voice dialing of your mobile phone. For this, the voice dialing function must be available on the mobile phone. Refer to *your mobile phone manual* for further instruction.

Note:

1. If you have two phones connected to your headset and you have an incoming call from the second phone during the call of the first phone, then you may still receive the call from the second phone. In this case, the call from the first phone is on waiting mode. If you end a call, then it will automatically guide you to the first phone call.
2. If you have a mobile phone and a GPS connected to your headset, you may not be able to listen to the GPS voice instruction during the phone call.

6.2 Speed Dialing

You can quickly make a phone call by using the voice speed dial menu.

1. To enter into the voice speed dial menu, press and hold the (+) Button for 3 seconds and you will hear a mid-toned single beep and a voice prompt saying **“Speed dial”**.
2. Tap the (+) Button or the (-) Button to navigate between the menus. You will hear voice prompts for each menu item.
3. Tap the Center Button to select a voice menu among the followings:

(1) Last number redial

(4) Speed dial 3

(2) Speed dial 1

(5) Cancel

(3) Speed dial 2

4. After selecting the last number redial menu, you will hear a voice prompt, **“Last number redial”**. Then, to redial the last phone call number, tap the Center Button.
5. To call one of the speed dials, tap the (+) Button or the (-) Button to navigate between the menus until you hear a voice prompt saying **“Speed dial (#)”**. Then, tap the Center Button.
6. If you want to exit the speed dial immediately, tap the (+) Button or the (-) Button until you hear a voice prompt saying **“Cancel”**, and tap the Center Button. If you do not press any button within 15 seconds, the LSE-01 will exit the voice speed dial menu and go back to stand-by mode.

Note:

1. Make sure that you connect the mobile phone and the headset to use the speed dial function.
2. You need to assign speed dial numbers before using the speed dial (please refer to section 15.1, “Assigning Speed Dial”).

6.3 GPS Navigation

6.3.1 GPS Pairing

1. Turn on the headset and press the Center Button for 10 seconds until you hear high-toned double beeps. You will also hear a voice prompt saying "Configuration menu".
2. Triple tap the (+) Button and you will hear the voice prompt saying **"GPS pairing"**.
3. Search for Bluetooth devices on the GPS navigation screen. Select the Louis LSE-01 in the list of the devices detected on the GPS.
4. Enter 0000 for the PIN.
5. The GPS confirms that pairing has completed and the LSE-01 is ready to use. You will hear a voice prompt saying **"Your headset is paired"**.
6. If the pairing process is not completed within three minutes, the LSE-01 will return to stand-by mode.

Note:

If you pair your GPS device via GPS Pairing, its instructions will interrupt your intercom conversations.

6.3.2 GPS Pairing as Mobile Phone

If a GPS is not only used for turn-by-turn voice instructions but also is your preferred Bluetooth stereo music source, you can pair the GPS to the LSE-01 by following the simple procedures in 5.1, *"Mobile Phone Pairing - Mobile Phone, Bluetooth Stereo Device"*. However, since some GPS systems support mobile phone bridging over Bluetooth, you can pair the mobile phone to the GPS to use your mobile phone. When you do this, the LSE-01 think the GPS is a mobile phone so you can no longer pair your mobile phone to the LSE-01 directly. Please refer to the user's guide of your GPS for details.

6.4 Sena SR10, Two-Way Radio Adapter

You can use a two-way radio and an intercom conversation or a mobile phone call simultaneously by using the Sena SR10, a Bluetooth Two-way Radio Adapter (please refer to section 5.2, *"Second Mobile Phone Pairing - Second Mobile Phone, GPS, and SR10"*). The incoming audio from the two-way radio via SR10 is heard in the background while having an intercom conversation or a mobile phone call. You can listen to music, answer a mobile call, have an intercom conversation and use a two-way radio via the SR10 for group communication. Please refer to the SR10 User's Guide for details.

7 STEREO MUSIC

7.1 Bluetooth Stereo Music

The Bluetooth audio device must be paired with the LSE-01 by following the “*Mobile Phone Pairing - Mobile Phone, Bluetooth Stereo Device*” procedures described in the *section 5.1*. The LSE-01 supports the Audio/Video Remote Control Profile (AVRCP), so if your Bluetooth audio device also supports the AVRCP, you can use the LSE-01 to remotely control music playback. Not only can you adjust the volume but you can also use functions such as play, pause, next track and previous track.

1. To play or pause music, press the Center Button for 1 second until you hear a double beep.
2. To adjust the volume, tap the (+) Button or the (-) Button.
3. To track forward or track back, press and hold the (+) Button or the (-) Button for 1 second until you hear a beep.

7.2 Music Sharing

You can start sharing music with an intercom friend using Bluetooth stereo music during a two-way intercom conversation (please refer to *section 8.1, “Two-way Intercom”*). When you terminate music sharing, you can go back to the intercom conversation. To start or terminate sharing music, press the Center Button for 1 second during an intercom conversation. To track forward or track back, press and hold the (+) Button or the (-) Button for 1 second.

Note:

1. Both you and your intercom friend can remotely control music playback such as track forward and track back.
2. Music sharing will be paused when you are using your mobile phone or listening to GPS instructions.

8 INTERCOM

Please make sure your intercom devices are paired as described in section 5.4, “Intercom Pairing”

8.1 Two-way Intercom

8.1.1 Starting Two-way Intercom

You can start an intercom conversation with one of any intercom friends by tapping the Center Button. Tap the Center Button once to intercom with the **first intercom friend**, tap the Center Button twice to intercom with the **second intercom friend**, and tap the Center Button three times to intercom with the **third intercom friend**.

8.1.2 Ending Two-way Intercom

You can end an intercom conversation by using the Center Button. Press and hold the Center Button for 3 seconds to end any intercom. Or, you can single tap to end intercom with the **first intercom friend**, double tap to end intercom with the **second intercom friend**, and triple tap to end intercom with the **third intercom friend**.



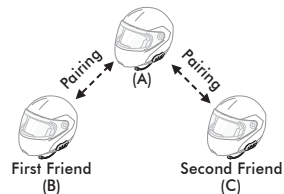
Start/End Two-way Intercom Conversation

8.2 Three-way Intercom

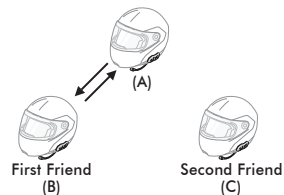
8.2.1 Starting Three-way Intercom

You (A) can have a three-way conference intercom with two other LSE-01 friends (B & C) by establishing two intercom connections simultaneously. While a three-way conference intercom is in progress, mobile phone connection of all three participants is temporarily disconnected. However, as soon as the conference intercom terminates or one of the participants leaves the intercom, all mobile phones automatically reconnect to their headsets. If you have an incoming mobile phone call during the conference intercom, terminate the conference intercom to automatically reconnect and receive the phone call.

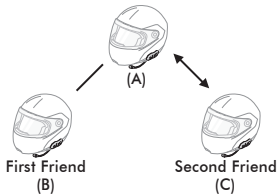
1. You (A) need to be paired with two other friends (B & C) for three-way conference intercom.



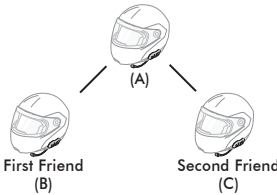
2. Start an intercom conversation with one of the two friends in your intercom group. For example, you (A) may start an intercom conversation with the intercom friend (B). Or intercom friend (B) may start an intercom call with you (A).



3. You (A) can call the second intercom friend (C) by double tapping the Center Button, or the second intercom friend (C) may join the intercom by making an intercom call to you (A).



4. Now you (A) and two LSE-01 intercom friends (B & C) are having a three-way conference intercom.



8.2.2 Ending Three-way Intercom

You can completely terminate the conference intercom or just disconnect an intercom connection with one of your active intercom friends.

1. Press the Center Button for 3 seconds until you hear a beep to terminate three-way conference intercom completely. It terminates both intercom connections with (B) and (C).
2. Tap or double tap the Center Button to disconnect intercom connection with one of the two intercom friends accordingly. For example, by single tapping the Center Button, you can terminate the intercom connection with just the first intercom friend (B). However, you still have the intercom connection with your second intercom friend (C).

Center Button Operation	Result
Press for 3 seconds	Disconnect (B) & (C)
Single tap	Disconnect (B)
Double tap	Disconnect (C)

End Three-way Intercom

8.3 Four-way Intercom

8.3.1 Starting Four-way Intercom

You can have four-way conference intercom with three other LSE-01 users by adding one more intercom participant to the three-way intercom. While you are having a three-way intercom as above in *section 8.2, “Three-way Intercom”*, a new participant (D), who is an intercom friend of your intercom friend (C), may join the conference intercom by making an intercom call to your intercom friend (C). Please note that in this case, the new participant (D) is an intercom friend of (C), not of you (A).

8.3.2 Ending Four-way Intercom

As same in the case of three-way intercom, you can completely get out of the four-way conference intercom or just disconnect a single intercom connection.

1. Press the Center Button for 3 seconds until you hear a beep to terminate four-way conference intercom. It terminates the intercom connections between you (A), and your intercom friends (B) and (C).

2. Tap or double tap the Center Button to disconnect the intercom connection with one of the two intercom friends accordingly. However, when you disconnect the second friend (C) by double tapping the Center Button, you will be disconnected with the third participant (D) as well. This is because the third participant (D) is connected with you via the second friend (C).

Center Button Operation	Result
Press for 3 seconds	Disconnect (B), (C) & (D)
Single tap	Disconnect (B)
Double tap	Disconnect (C) & (D)

End Four-way Intercom

Note:

Multiple headsets are connected during multi-way intercom. With various signals interfering each other, the intercom distance of multi-way intercom is relatively shorter than that of two-way intercom.

9 THREE-WAY CONFERENCE PHONE CALL WITH INTERCOM PARTICIPANT

1. When you have an incoming mobile phone call during an intercom conversation, you will hear a ring tone. You can choose whether to *1) answer the mobile phone call and stop the intercom conversation, or 2) reject the phone call and stay on the intercom conversation.*
 - 1) To answer the phone call and stop the intercom conversation, tap the Center Button. The VOX Phone feature does not work if you are connected to intercom. When you hang up the phone call, the intercom will automatically be recovered.
 - 2) To reject the phone call and stay on the intercom conversation, press the Center Button for 2 seconds until you hear a beep.

Unlike other motorcycle Bluetooth headsets, this prevents a user from being dropped out of an intercom conversation by an incoming mobile call.

2. When you have an incoming intercom call during a mobile phone call, you will hear 4 high-toned beeps, alerting you that there is an incoming intercom call. You will also hear a voice prompt, **“Intercom requested”**. In this case, the intercom call does not override the mobile call because intercom has lower priority than mobile call. You have to hang up the mobile phone call to make or receive an intercom call.
3. You can have a three-way conference phone call by adding an intercom friend to the mobile phone conversation. During a mobile phone conversation, tap the Center Button to invite one of the intercom friends to the mobile phone line. To disconnect the intercom first and go back to your private mobile phone call, terminate the intercom by tapping the Center Button. To end the mobile phone call first and maintain the intercom conversation, tap the Center Button for 2 seconds, or wait for the person on the mobile phone line to end the call.

Start	Tap the Center Button while having a mobile phone call
End intercom first	Tap the Center Button
End phone call first	Tap the Center Button for 2 seconds or Wait for the called person to end the call

Start & End Three-way Conference Phone Call

10 GROUP INTERCOM

Group Intercom allows you to instantly create a multi-way conference intercom with three other most recently paired headsets.

1. Go through intercom pairing with up to three headsets you want to have Group Intercom with.
2. Tap the (+) Button and (-) Button simultaneously to begin Group Intercom. The LED will flash green and you will hear a voice prompt, **“Group intercom connected”**.
3. To terminate Group Intercom, press the Center Button for 3 seconds during Group Intercom. You will hear a voice prompt, **“Group intercom terminated”**.

11 UNIVERSAL INTERCOM

You can have an intercom conversation with non-Sena Bluetooth headsets using the Universal Intercom function. Non-Sena Bluetooth headsets can be connected to the Sena Bluetooth headset if they support the Bluetooth Hands-Free Profile (HFP). The working distance may differ depending on the performance of Bluetooth headset that it is connected to. In general, it is shorter than normal intercom distance since it uses the Bluetooth Hands-Free Profile. The Universal Intercom affects both the phone call connection and the multipoint connection (mostly used for GPS connections for riders). You cannot use a multipoint connection device while you are using the Universal Intercom in case as below.

1. If a non-Sena headset does not support a multipoint connection, it cannot use a phone call connection while using the Universal Intercom.
2. As for Sena headsets, the Universal Intercom affects the multipoint connection.
3. If non-Sena headset (already paired as Universal Intercom with Sena) is turned on, then the multipoint connection is automatically deactivated. And the non-Sena headset is automatically connected to Sena headset as a Universal Intercom. So you cannot use multipoint connection devices such as GPS, while a non-Sena headset is turned on.
4. Even though you disconnect the non-Sena headset as a Universal Intercom, it will not automatically restore the multipoint connection. To restore the multipoint connection, you should turn off the non-Sena headset first, then try to connect to multipoint device manually from the device screen or simply reboot the device so that it automatically connects to the Sena headset.

11.1 Universal Intercom Pairing

The LSE-01 can be paired with non-Sena Bluetooth headsets for Bluetooth intercom conversation. You can pair the LSE-01 with only one non-Sena Bluetooth headset so if you pair with a different non-Sena Bluetooth headset, the previous pairing will be removed.

1. Turn on the LSE-01 and a non-Sena Bluetooth headset that you want to pair with.
2. Press and hold the Center Button for 10 seconds to enter the configuration menu. Tap the (+) Button or the (-) Button until you hear a voice prompt, **“Universal intercom pairing”**. Tap the Center Button to enter into Universal Intercom Pairing mode. Please refer to *section 14.8, “Universal Intercom Pairing”* for more details.
3. Perform the operation required for handsfree pairing on the non-Sena Bluetooth headset (refer to *the User’s Manual for the headsets* you want to use). The LSE-01 will automatically pair with a non-Sena Bluetooth headset when each are in pairing mode.

11.2 Two-way Universal Intercom

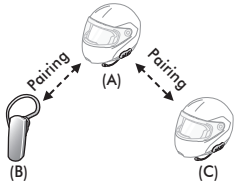
You can initiate the Universal Intercom connection with non-Sena Bluetooth headsets using the same intercom connection method as you would between other Sena headsets. You may single tap the Center Button to begin an intercom conversation with the first intercom friend, double tap with the second intercom friend, and triple tap with the third intercom friend.

Non-Sena Bluetooth headsets may initiate the Universal Intercom connection, by activating the voice dialer or using the redialing operation. You may also disconnect the existing connection by using the operation to end a call (refer to *the User’s Manual for the headsets* for voice dialer, redialing, and ending a call).

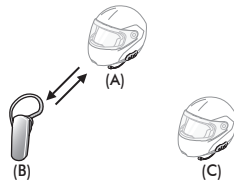
11.3 Three-way Universal Intercom

You may make a three-way Universal Intercom connection with two LSE-01s and one non-Sena Bluetooth headset. If the intercom connection is made, all headsets connected cannot use the mobile phone call function since the connection between the headset and the phone is disconnected temporarily. If you disconnect the intercom call, the mobile phone connection is made again automatically so that you can use a mobile phone call function.

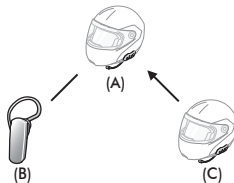
1. You (A) need to be paired with a non-Sena Bluetooth headset (B) and another LSE-01 headset (C) for the three-way conference intercom.



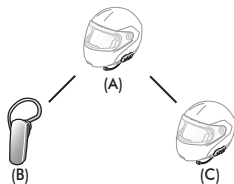
2. Start an intercom conversation with non-Sena Bluetooth headset (B) in your intercom group. For example, you (A) may start an intercom conversation with non-Sena Bluetooth headset (B). The non-Sena Bluetooth headset (B) may also start an intercom call with you (A).



3. The other LSE-01 (C) may join the intercom by making an intercom call to you (A).



4. Now you (A), non-Sena Bluetooth headset (B), and the other LSE-01 (C) are having a three-way conference intercom.



5. You may disconnect three-way Universal Intercom using the same way as you do in normal three-way intercom. Please refer to section 8.2.2, "Ending Three-way Intercom".

11.4 Four-way Universal Intercom

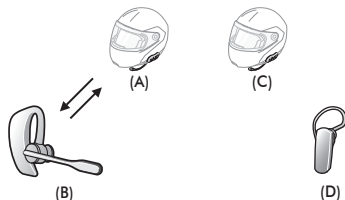
You may make a four-way Universal Intercom connection with a couple of different configurations, 1) *three LSE-01s and one non-Sena Bluetooth headset* or 2) *two LSE-01s and two non-Sena Bluetooth headsets*.

You may have a couple of other Four-way Universal Intercom configurations, 1) *your headset (A), a non-Sena Bluetooth headset (B), another LSE-01 (C), and a non-Sena Bluetooth headset (D)*, 2) *your headset (A), a non-Sena Bluetooth headset (B), and two other LSE-01 headsets (C and D)*. You may make the four-way Universal Intercom call the same way as a normal four-way intercom call.

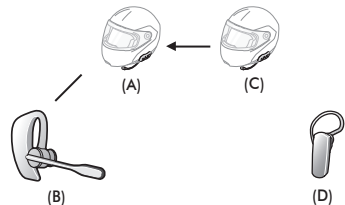
11.4.1 Four-way Universal Intercom Case 1

Two LSE-01 headsets (A and C) and two non-Sena Bluetooth headsets (B and D).

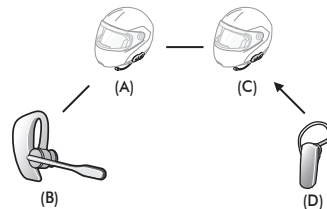
1. You (A) may start an intercom conversation with the non-Sena Bluetooth headset (B).



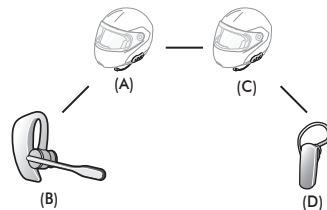
2. The other LSE-01 (C) may join the intercom by making an intercom call to you (A).



3. The non-Sena Bluetooth headset (D) may join the conference intercom by making an intercom call to the LSE-01 (C).



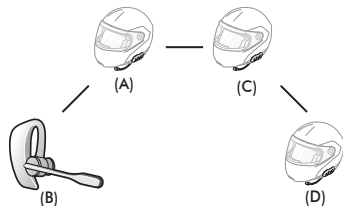
4. Now two LSE-01 headsets (A & C) and two non-Sena Bluetooth headsets (B & D) are connected with the four-way Universal Intercom.



You may disconnect a four-way Universal Intercom using the same way as you do in a normal four-way intercom. Please refer to *section 8.3.2, "Ending Four-way Intercom"*.

11.4.2 Four-way Universal Intercom Case 2

Three LSE-01 headsets (A, C and D) and one non-Sena Bluetooth headset (B). The procedure is the same as case 1 described in *section 11.4.1*.



12 FM RADIO

12.1 FM Radio On and Off

To turn on the FM radio, press the (-) Button for 1 second until you hear a mid-toned double beep sound. You will then hear a voice prompt, **“FM on”**. To turn off the FM radio, press the (-) Button for 1 second until you hear a voice prompt, **“FM off”**. When you power it off, the LSE-01 will remember the last station frequency. When you power it on, the last station frequency will be playing.

12.2 Preset Stations

You can listen to preset stations while listening to the FM radio. Press the Center Button for 1 second to go upward to your next saved preset station.

12.3 Seek and Save

“Seek” is the function that searches for station to station frequencies. To use the “Seek” function, please follow the procedure below:

1. Double tap the (+) Button or the (-) Button to search up or down the station dial.
2. If the tuner finds a station while searching frequencies, it stops the seek function.
3. To save the current station, press and hold the Center Button for 3 seconds until you hear a voice prompt, **“Preset (#)”**.
4. Tap the (+) Button or the (-) Button in order to select which preset number you want for that specific station. You can save up to 10 preset stations. (You may cancel the preset operation by waiting approximately 10 seconds. You will then hear **“Save preset cancelled”**. You can also tap the (+) Button or the (-) Button until you hear **“Cancel”**. Tap the Center Button to confirm cancellation. You will then hear **“Save preset cancelled”**.)
5. To save the current station, press the (+) Button for 1 second. You will then hear a voice prompt, **“Save preset (#)”**.
6. To delete the saved station in the preset number, press the (-) Button for 1 second. You will then hear a voice prompt, **“Delete preset (#)”**.

Note:

1. You can save FM stations to presets before using FM radio. Connect the LSE-01 to your PC and open the Sena Device Manager. It allows you to save up to 10 FM station frequency presets on the LSE-01 settings menu. You may do the same operation by using the Sena SF Utility App.
2. You can still answer an incoming phone call and intercom while listening to the FM radio.

12.4 Scan and Save

“Scan” is the function that automatically searches station frequencies, starting from the current frequency and up. To use the scan function, please follow the procedures below:

1. Press the (+) Button for 1 second. Then the current station frequency moves upward to find other station frequencies.
2. If the tuner finds a station, it stays at the station frequency for 8 seconds, then scanning to the next station frequency.
3. Scan function stops when you press the (+) Button for 1 second again.
4. To save a station while scanning frequencies, tap the Center Button at that station. You will hear a voice prompt, **“Save preset (#)”**. The station will be saved as the next preset number.
5. All stations preset during “Scan”, will overwrite previously set stations.

12.5 Temporary Preset

With the temporary preset function, you may temporarily preset stations automatically without changing the existing preset stations. Tap the (+) Button three times to automatically scan for 10 temporary preset stations. The temporary preset stations will be cleared when the system is powered off.

12.6 FM Sharing

With FM sharing, you can listen to the radio during the intercom conversation. To start FM sharing, press the (-) Button for 1 second during the intercom conversation. During FM sharing, you can move to the next preset station and you or your friend on the intercom can change frequencies. If either person changes the frequency, the other will listen to the same frequency. To terminate FM sharing, press the (-) Button for 1 second or end the intercom call.

12.7 Region Selection

You can select the proper FM frequency region from the Sena Device Manager. With the region setting, you may optimize the seek function to avoid unnecessary frequency ranges (factory default: worldwide).

Region	Frequency Range	Step
Worldwide	76.0 ~ 108.0 MHz	± 100 kHz
Americas	87.5 ~ 107.9 MHz	± 200 kHz
Asia	87.5 ~ 108.0 MHz	± 100 kHz
Australia	87.5 ~ 107.9 MHz	± 200 kHz
Europe	87.5 ~ 108.0 MHz	± 100 kHz
Japan	76.0 ~ 95.0 MHz	± 100 kHz

13 FUNCTION PRIORITY

The LSE-01 operates in the following order of priority:

(highest)	Mobile phone
	Intercom/FM sharing
	Music sharing by Bluetooth stereo music
	Bluetooth stereo music
(lowest)	FM Radio

A lower priority function is always interrupted by a higher priority function. For example, stereo music is interrupted by an intercom call, and an intercom conversation is interrupted by an incoming mobile phone call.

Note:

If you select music as the audio source priority, the order of priority will change as below:

(highest)	Mobile phone
	Bluetooth stereo music
	Intercom/FM sharing
	Music sharing by Bluetooth stereo music
(lowest)	FM Radio

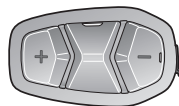
14 HEADSET CONFIGURATION SETTINGS

You can set the configuration of the LSE-01 by the voice menu instruction described below.

1. To enter into voice configuration menu, press and hold the Center Button for 10 seconds until you hear high-toned double beeps. You will also hear a voice prompt, **“Configuration menu”**.
2. Tap the (+) Button or the (-) Button to navigate between the menus. You will hear voice prompts for each menu item as below.
3. You can enable/disable a feature or execute a command by tapping the Center Button.
4. If no button is pressed within 10 seconds, the LSE-01 will exit the configuration and go back to stand-by mode.
5. If you want to exit the configuration immediately, tap the (+) Button or the (-) Button until you hear a voice prompt, **“Exit configuration”**, and tap the Center Button.

The voice prompt for each menu item is as below:

- | | |
|--|---------------------------------------|
| (1) Phone pairing | (6) Delete all pairings |
| (2) Second mobile phone pairing | (7) Remote control pairing |
| (3) GPS pairing | (8) Universal intercom pairing |
| (4) Phone selective pairing | (9) Factory reset |
| (5) Media selective pairing | (10) Exit configuration |



Phone pairing
Second mobile phone pairing
GPS pairing
Phone selective pairing
Media selective pairing
Delete all pairings
Remote control pairing
Universal intercom pairing
Factory reset
Exit configuration

14.1 Mobile Phone Pairing

Voice Prompt	“Phone pairing”
Factory Default	N/A

To go into mobile phone pairing mode, tap the (+) Button or the (-) Button until you hear the voice prompt, **“Phone pairing”**. Please refer to *section 5.1, “Mobile Phone Pairing - Mobile Phone, Bluetooth Stereo Device”* for details on mobile phone pairing. If you tap the (+) Button or the (-) Button, you can exit from the phone pairing mode.

14.2 Second Mobile Phone Pairing

Voice Prompt	“Second mobile phone pairing”
Factory Default	N/A

To go into second mobile phone pairing mode, tap the (+) Button or the (-) Button until you hear the voice prompt, **“Second mobile phone pairing”**. Please refer to *section 5.2, “Second Mobile Phone Pairing - Second Mobile Phone, GPS, and SR10”* for details on second mobile phone pairing. If you tap the (+) Button or the (-) Button, you can exit from the second mobile phone pairing mode.

14.3 GPS Pairing

Voice Prompt	“GPS pairing”
Factory Default	N/A

To go into GPS pairing mode, tap the (+) Button or the (-) Button until you hear the voice prompt, **“GPS pairing”**. Please refer *section 6.3.1, “GPS Pairing”* for details on GPS pairing. If you tap the (+) Button or the (-) Button, you can exit from the GPS pairing mode.

14.4 Phone Selective Pairing

Voice Prompt	“Phone selective pairing”
Factory Default	N/A

To go into phone selective pairing mode, tap the (+) Button or the (-) Button until you hear the voice prompt, **“Phone selective pairing”**. Please refer to *section 5.3.2, “HFP for Phone Call Only”* for details on phone selective pairing. If you tap the (+) Button or the (-) Button, you can exit from the phone selective pairing mode.

14.5 Media Selective Pairing

Voice Prompt	“Media selective pairing”
Factory Default	N/A

To go into media selective pairing mode, tap the (+) Button or the (-) Button until you hear the voice prompt, **“Media selective pairing”**. Please refer *section 5.3.1, “A2DP Stereo Music Only”* for details on media selective pairing. If you tap the (+) Button or the (-) Button, you can exit from the media selective pairing mode.

14.6 Delete All Bluetooth Pairing Information

Voice Prompt	“Delete all pairings”
Factory Default	N/A
Execute	Tap the Center Button

To delete all Bluetooth pairing information of the LSE-01, tap the (+) Button or the (-) Button until you hear a voice prompt, **“Delete all pairings”**, and tap the Center Button to confirm.

14.7 Remote Control Pairing

Voice Prompt	“Remote control pairing”
Factory Default	N/A
Execute	Tap the Center Button

To enter into remote control pairing mode, tap the (+) Button or the (-) Button until you hear a voice prompt, **“Remote control pairing”**. Then tap the Center Button to enter into remote control pairing mode. The headset will automatically exit from the configuration menu.

14.8 Universal Intercom Pairing

Voice Prompt	“Universal intercom pairing”
Factory Default	N/A
Execute	Tap the Center Button

To enter into universal intercom pairing mode, tap the (+) Button or the (-) Button until you hear a voice prompt, **“Universal intercom pairing”**. Then tap the Center Button to enter into universal intercom pairing mode. The headset will automatically exit from the configuration menu.

14.9 Factory Reset

Voice Prompt	“Factory reset”
Factory Default	N/A
Execute	Tap the Center Button

To restore factory default settings on the LSE-01, tap the (+) Button or the (-) Button until you hear a voice prompt, **“Factory reset”**, and tap the Center Button to confirm. The LSE-01 powers off with a voice prompt, **“Headset reset, goodbye”**.

14.10 Exit Voice Configuration Menu

Voice Prompt	“Exit configuration”
Factory Default	N/A
Execute	Tap the Center Button

To exit voice configuration menu and get back to stand-by mode, tap the (+) Button or the (-) Button until you hear a voice prompt, **“Exit configuration”**, and tap the Center Button to confirm.

Tap (+) Button or (-) Button	Tap Center Button
Phone Pairing	None
Second Mobile Phone Pairing	None
GPS Pairing	None
Phone Selective Pairing	None
Media Selective Pairing	None
Delete All Pairings	Execute
Remote Control Pairing	Execute
Universal Intercom Pairing	Execute
Factory Reset	Execute
Exit Configuration	Execute

Voice Configuration Menu & Button Operations

15 SOFTWARE CONFIGURATION SETTINGS

In addition to the headset configuration menu, you can change the settings of the LSE-01 through the Sena Device Manager or the Sena SF Utility App.

15.1 Assigning Speed Dial

Assign phone numbers for speed dialing to make a phone call quickly. Please visit the Sena Bluetooth website at www.sena.com for more information.

15.2 Setting Audio Source Priority (Default: Intercom)

Audio Source Priority allows you to select the priority between the intercom and music (which includes GPS app instructions and message notifications) from a smartphone. If the intercom is selected as the audio source priority, your music will be interrupted during an intercom conversation. If music is selected as the audio source priority, intercom conversations will be interrupted while your music is heard.

15.3 Enabling/Disabling Audio Boost (Default: Disable)

Enabling Audio Boost increases the overall maximum volume. Disabling Audio Boost reduces the overall maximum volume, but delivers more balanced sound.

15.4 Enabling/Disabling Smart Volume Control (Default: Disable)

Smart Volume Control automatically changes the level of the speaker volume based on the level of the environmental noise. When it is disabled, volume is controlled manually. You can enable the level adjustment by setting the sensitivity to low, medium, or high. Smart Volume Control responds to smaller environmental noises as the sensitivity level becomes higher.

15.5 Enabling/Disabling Voice Activated Phone Answering (Default: Enable)

If this feature is enabled, you can answer incoming calls by voice. When you hear a ringtone for an incoming call, you can answer the phone by saying a word such as “Hello” loudly or by blowing air into the microphone. VOX phone is temporarily disabled if you are connected to intercom. If this feature is disabled, you have to tap the Center Button to answer an incoming call.

15.6 Enabling/Disabling Voice Activated Intercom (Default: Disable)

If this feature is enabled, you can initiate an intercom conversation with the last connected intercom friend by voice. When you want to start intercom, say a word such as **“Hello”** loudly or blow air into the microphone. If you start an intercom conversation by voice, the intercom terminates automatically when you and your intercom friend remain silent for 20 seconds. However, if you manually start an intercom conversation by tapping the Center Button, you have to terminate the intercom conversation manually.

However, if you start intercom by voice and end it manually by tapping the Center Button, you will not be able to start intercom by voice temporarily. In this case, you have to tap the Center Button to restart the intercom. This is to prevent repeated unintentional intercom connections by strong wind noise. After rebooting the LSE-01, you can start intercom by voice again.

15.7 Enabling/Disabling HD Intercom (Default: Enable)

HD Intercom enhances the two-way intercom audio from normal quality to HD quality. HD Intercom will become temporarily disabled when you enter into a multi-way intercom. If this feature is disabled, the two-way intercom audio will change to normal quality.

Note:

The intercom distance of HD Intercom is relatively shorter than that of normal intercom.

15.8 Setting Intercom VOX Sensitivity (Default: 3)

VOX sensitivity can be adjusted depending on your riding environment. Level 5 is the highest sensitivity setting and 1 is the lowest.

15.9 Enabling/Disabling Voice Prompts (Default: Enable)

You can disable voice prompts by software configuration settings, but the following voice prompts are always on.

- Voice prompts for headset configuration settings menu
- Voice prompts for battery level indicator
- Voice prompts for speed dial
- Voice prompts for FM radio functions

15.10 Enabling/Disabling RDS AF (Default: Disable)

RDS AF allows a receiver to re-tune to the second frequency location when the first signal becomes too weak. With RDS AF enabled on the receiver, a radio station with more than one frequency can be used.

15.11 Enabling/Disabling FM Station Guide (Default: Enable)

When FM Station Guide is enabled, FM station frequencies are given by voice prompts as you select preset stations. When FM Station Guide is disabled, the voice prompts on FM station frequencies will not be given as you select preset stations.

15.12 Enabling/Disabling Sidetone (Default: Disable)

Sidetone is audible feedback of your own voice. It helps you to naturally speak at the correct level according to varying helmet noise conditions. If this feature is enabled, you can hear what you are speaking during an intercom conversation or a phone call.

15.13 Enabling/Disabling Advanced Noise Control™ (Default: Enable)

When Advanced Noise Control is enabled, the background noise is reduced during an intercom conversation. When it is disabled, the background noise is mixed with your voice during intercom.

Note:

If you use your LSE-01 with the Bluetooth Audio Pack for GoPro, you can enable or disable this feature only during Normal Audio Recording Mode. This feature is automatically disabled while in Ultra HD (UHD) Audio Mode.

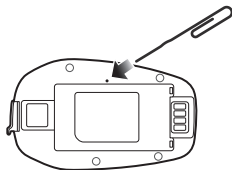
16 FIRMWARE UPGRADE

The LSE-01 supports firmware upgrades. You can update the firmware using the Sena Device Manager (please refer to *section 4.7.1, “Sena Device Manager”*). Please visit Sena Bluetooth website at [**www.sena.com**](http://www.sena.com) to check the latest software downloads.

17 TROUBLESHOOTING

17.1 Fault Reset

When the LSE-01 is not working properly or is in faulty status for any reason, you may reset by gently pushing the pin-hole reset button on the back of the main unit. Insert a paper clip into the reset pin-hole and press the reset button for a second with light pressure. The LSE-01 will be switched off. Restart the system and try again. This will not restore the headset to factory default settings.



17.2 Factory Reset

If you want to restore the headset to factory default settings, use the Factory Reset in the configuration menu. The headset automatically restores the default settings and turns off. Please refer to *section 14.9, "Factory Reset"* for more details.

18 QUICK OPERATION REFERENCE

Type	Function	Button Command	LED	Beep
Basic Function	Power on	Press the Center Button and the (+) Button for 1 second	Solid blue	Ascending beeps
	Power off	Tap the Center Button and the (+) Button	Solid red	Descending beeps
	Volume adjustment	Tap the (+) Button or the (-) Button	-	-
	Microphone Mute	Press the Center Button and the (-) Button for 1 second	-	Ascending beeps/ Descending beeps
Mobile Phone	Answer mobile phone call	Tap the Center Button	-	-
	End mobile phone call	Press the Center Button for 2 seconds	-	-
	Voice dial	Press the Center Button for 3 seconds	-	-
	Speed dial	Press the (+) Button for 3 seconds	-	Mid-toned single beep
	Reject incoming call	Press the Center Button for 2 seconds	-	-
Intercom	Intercom pairing	Press the Center Button for 5 seconds	Red flashing	Mid-toned single beep & double beeps
		Tap the Center Button of any one of the two headsets		

Type	Function	Button Command	LED	Beep
Intercom	Start/End each intercom	Tap the Center Button	-	-
	End all intercoms	Press the Center Button for 3 seconds	-	-
	Start Group Intercom	Tap the (+) Button and the (-) Button at the same time	Green flashing	-
	End Group Intercom	Press the Center Button for 3 seconds	-	-
Music	Play/Pause Bluetooth music	Press the Center Button for 1 second	-	-
	Track forward/back	Press the (+) Button or the (-) Button for 1 second	-	-
FM Radio	FM radio on/off	Press the (-) Button for 1 second	-	Mid-toned double beeps
	Select preset	Press the Center Button for 1 second	-	Mid-toned single beep
	Seek stations	Double tap the (+) Button or the (-) Button	-	High-toned triple beeps
	Scan up FM band	Press the (+) Button for 1 second	-	-
	Stop scanning	Press the (+) Button for 1 second	-	High-toned double beeps
	Save preset while scanning	Tap the Center Button	-	High-toned double beeps

CERTIFICATION AND SAFETY APPROVALS

FCC Compliance Statement

This device complies with part 15 of the FCC rules. Operation is subject to the following two conditions:

- (1) This device may not cause harmful interference, and
- (2) This device must accept any interference received, including interference that may cause undesired operation.

This equipment has been tested and found to comply with the limits for a Class B digital device pursuant to part 15 of the FCC rules. These limits are designed to provide reasonable protection against harmful interference in a residential installation. This equipment generates, uses and can radiate radio frequency energy and, if not installed and used in accordance with the instructions, may cause harmful interference to radio communications. However, there is no guarantee that interference will not occur in a particular installation. If this equipment does cause harmful interference to radio or television reception, which can be determined by turning the equipment on and off, the user is encouraged to try to correct the interference by one or more of the following measures:

- Reorient or relocate the receiving antennae
- Increase the separation between the equipment and the receiver

- Connect the equipment into an outlet on a circuit different from that to which the receiver is connected
- Consult the dealer or an experienced radio/TV technician for help

FCC RF Exposure Statement

This equipment complies with FCC radiation exposure limits set forth for an uncontrolled environment. End users must follow the specific operating instructions for satisfying RF exposure compliance. The antenna used for this transmitter must not transmit simultaneously with any other antenna or transmitter, except in accordance with FCC multi-transmitter product procedures.

FCC Caution

Any changes or modifications to the equipment not expressly approved by the party responsible for compliance could void user's authority to operate the equipment.

CE Declaration of Conformity

This product is CE marked according to the provisions of the R&TTE Directive (2014/53/EU). Hereby, Sena declares that the radio equipment type SP52 is in compliance with Directive 2014/53/EU. For further information, please consult www.sena.com. Please note that this product uses radio frequency bands not harmonized within EU. Within the EU this product is intended to be used in Austria, Belgium, Denmark, Finland, France, Germany, Greece, Ireland, Italy,

Luxembourg, The Netherlands, Portugal, Spain, Sweden, United Kingdom and within EFTA in Iceland, Norway and Switzerland.

This device can be operated in at least one MemberState without infringing applicable requirements on the use of radio spectrum.

RF Range: 2402 ~ 2480MHz

Max Output Power(E.I.R.P.): 17.74 dBm

Industry Canada Statement

This device complies with Industry Canada license-exempt RSS standard(s). Operation is subject to the following two conditions:

- (1) This device may not cause interference.
- (2) This device must accept any interference, including interference that may cause undesired operation of the device.

Le présent appareil est conforme aux CNR d'Industrie Canada applicables aux appareils radio exempts de licence. Son fonctionnement est soumis aux deux conditions suivantes :

- (1) Cet appareil ne doit pas créer d'interférences préjudiciables.
- (2) Cet appareil doit accepter toute interférence reçue, y compris celles causant un fonctionnement indésirable de l'appareil.

Bluetooth License

The Bluetooth® word mark and logos are owned by the Bluetooth SIG, Inc. and any use of such marks by Sena is under license. Other trademarks and trade names are those of their respective owners.

The product is compliant with and adopts the Bluetooth® Specification 4.1 and has successfully passed all interoperability tests that are specified in the Bluetooth® specification. However, interoperability between the device and other Bluetooth®-enabled products is not guaranteed.

WEEE (Waste Electrical and Electronic Equipment)



The crossed-out wheel bin symbol on the product, literature, or packaging reminds you that all electrical and electronic products, batteries, and accumulators must be taken to separate collection at the end of their working life. This requirement applies to the European Union and other locations where separate collection systems are available. To prevent possible harm to the environment or human health from uncontrolled waste disposal, please do not dispose of these products as unsorted municipal waste, but hand it in at an official collection point for recycling.

LIMITED PRODUCT WARRANTY DISCLAIMERS, and LIMITATIONS

Limited Warranty

Limited Warranty

Detlev Louis Motorrad-Vertriebsgesellschaft mbH ("Louis") guarantees the product quality based on the technical specification stated in the product manual, and data regarding product warranty. Here, product warranty extends to the product only.

Warranty Period

Louis warrants that this product shall conform to and perform in accordance with published technical specifications and the accompanying written materials, and shall be free of defects in materials and workmanship, for a period of two (2) years from the date of purchase by the first consumer purchaser of the Product.

Termination

Quality warranty of the product becomes effective on the date of initial purchase. In addition, the quality warranty of the product expires when the warranty period expires. However, in the following cases, the warranty will be terminated prematurely.

- In the event the product has been sold or transferred to a third party.
- In the event the manufacturer's name, serial number, product label, or other markings have been modified or removed.

- In the event any unauthorized person has tried to disassemble, repair, or modify the product.

Notice and Waiver

By buying and using this product, you relinquish considerable legal rights including any claim for compensation for damages. Therefore, be certain to read and understand the following terms and conditions before using the product. Use of this product will constitute consent to this agreement, and forfeiture of rights to all claims. If you do not consent to all the terms and conditions of this agreement, return the product for a refund.

1. You must completely understand and accept all risks (including those occurring due to any careless behavior of yours or others) which may occur during the use of this product.
2. You are responsible for ensuring that your medical condition permits usage of the product and that you are in sufficient physical condition for using any device which can be used with it. In addition, you must ensure that the product does not limit your abilities and that you are able to use it safely.
3. You must be an adult who can take responsibilities for using the product.

4. You must read and understand the following warnings and alerts:

- Louis and Sena Technologies, Inc. ("Sena"), together with employees, managers, partners, subsidiaries, representatives, agents, supporting firms and suppliers, sole sellers of Louis and Sena (collectively referred to as "the company") recommend that, before using the product and similar devices of any brands including its derivative models, you collect any relevant information in advance and be entirely prepared in terms of weather, traffic situation, and road conditions.
- When you use the product while you operating any vehicle or equipment such as motorcycles, scooters, mopeds, ATVs, or quad-bikes (hereinafter called "transportation means"), you need to follow the safety precautions provided by the manufacturer of the vehicle.
- When you use the product, use good judgment; never use it under the influence of alcohol.

5. You must read and completely understand all terms and conditions of legal rights and warnings that are involved in using the product. In addition, usage of the product constitutes acceptance of all terms and conditions regarding waiver of rights.

Warranty Exclusions

Reasons for Limited Liabilities

If you do not return the product after purchasing it, you relinquish all rights to liabilities, loss, claims, and claims for reimbursement of expenses (including attorney's fees). Therefore, Louis will not be liable for physical injury, death, or any loss or damage of transportation means, possessions, or assets which belong to you or third parties that may have occurred while you use the product. Further, Louis will not be liable for any substantial damage not related to the condition, environment, or malfunction of the product. All risks related with the operation of the product depend entirely on the user regardless of its use by the initial purchaser of a third party.

Use of this product may violate local or national laws. In addition, be aware once again that correct and safe use of the product is entirely your responsibility.

Limitation of Liability

TO THE FULL EXTENT ALLOWED BY LAW, LOUIS EXCLUDES FOR ITSELF AND ITS SUPPLIERS ANY LIABILITY, WHETHER BASED IN CONTRACT OR TORT (INCLUDING NEGLIGENCE), FOR INCIDENTAL, CONSEQUENTIAL, INDIRECT, SPECIAL, OR PUNITIVE DAMAGES OF ANY KIND, OR FOR LOSS OF REVENUE OR PROFITS, LOSS OF BUSINESS, LOSS OF INFORMATION OR DATA, OR OTHER FINANCIAL LOSS ARISING OUT OF OR IN CONNECTION WITH THE SALE, INSTALLATION, MAINTENANCE, USE, PERFORMANCE, FAILURE, OR INTERRUPTION OF ITS PRODUCTS, EVEN IF LOUIS OR ITS AUTHORIZED RESELLER HAS BEEN ADVISED OF THE POSSIBILITY OF SUCH DAMAGES, AND LIMITS ITS LIABILITY TO REPAIR, REPLACEMENT, OR REFUND OF THE PURCHASE PRICE PAID, AT LOUIS'S OPTION. THIS DISCLAIMER OF LIABILITY FOR DAMAGES WILL NOT BE AFFECTED IF ANY REMEDY PROVIDED HEREIN SHALL FAIL OF ITS ESSENTIAL PURPOSE. IN ANY CASE, THE TOTAL COMPENSATION LIABILITIES OF LOUIS OR ITS SALES AGENTS SHALL NOT EXCEED THE PRICE PAID FOR THE PRODUCT BY THE PURCHASER.

Liabilities Disclaimer

In addition to damages which may occur due to the use of the product, Louis will not be liable for damages of the product which occur due to the following events.

- In the event the product is misused or used for purposes other than its intended purposes.
- In the event the product is damaged because the user does not follow the content of the product manual.
- In the event the product is damaged because it has been left unattended or has undergone any other accident.
- In the event the product is damaged because the user has used any parts or software which are not provided by the manufacturer.
- In the event the product is damaged because the user has disassembled, repaired, or modified it in such way as is not explained in the product manual.
- In the event the product is damaged by a third party.
- In the event the product is damaged due to Acts of God (including fire, flood, earthquake, storm, hurricane or other natural disaster).
- In the event the surface of the product is damaged by use.

Warranty Service

To obtain product warranty service, send the defective product, at your expense, to the manufacturer or the seller along with proof of purchase (a receipt that shows the purchase date, a product registration certificate of the Website, and other relevant information). Take necessary measures to protect the product. In order to get a refund or replacement, you must include the whole package as it was purchased. Louis will provide free-of-charge repair or replacement service for the product when product defects occur within the scope of the product warranty during the warranty period.

